

# Instructions For 56" Pull Box Type Paste Machine



## Catalog #51561 w/measuring counter

1. Place pasting machine on a firm table and fasten left and right "L" shaped clamps to the rear of the table top.
2. Mount left and right support arms to the outside of the rear legs using the holes above the "L" shaped clamps.
3. Load Paper on material Rod, and attach rod to left and right support arms.
4. Feed material through rear slot in trough and under front squeegee to material cutting edge.
5. Paste should be thoroughly mixed and flow smoothly, but should not be too thin to prevent leakage.
6. Open sliding trough cover and pour paste into laminated trough.
7. Pull about 6 inches of wallcovering through the paste machine. Check the thickness of paste applied. Adjust thickness of paste by turning left, right, and bottom control knobs. (clockwise reduces paste flow) Pull out a few more inches of wallcovering to check paste thickness. Adjust again if necessary.
8. If you still have too much paste in the middle after adjusting the lower center knob, loosen center control knob, tighten tie rod nuts slightly on each end of machine. Then, re-adjust the center control knob.
9. Cut Wallcovering at cutting blade edge with razor blade or knife. You are now ready to paste.

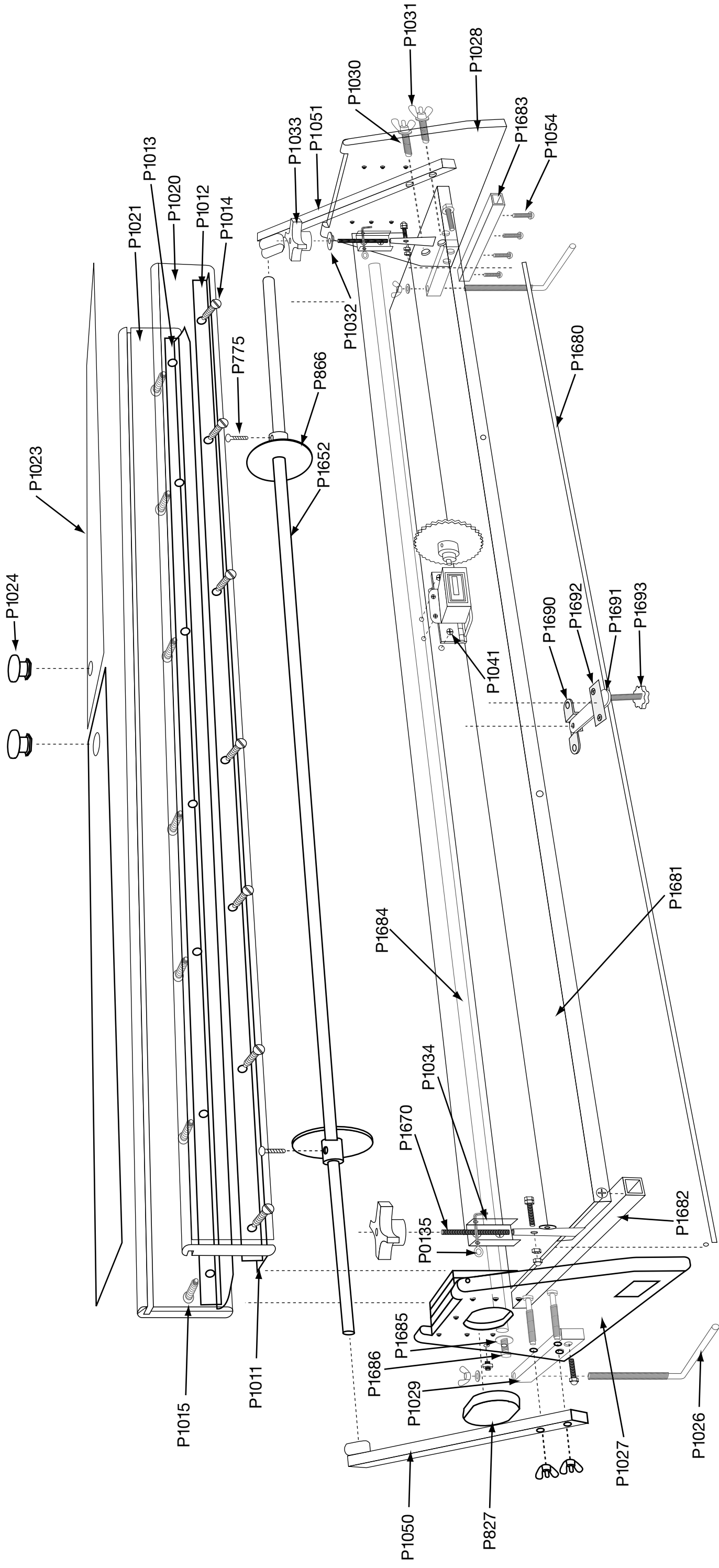
**NOTE: Do not pull complete bolt of wallcovering through paster. Stop before the last few inches feed into the paste trough. Leave the last six to eight inches for attaching new bolt to top side of previous bolt.**

**Using High quality 2 inch masking tape, attach the next bolt to the end of the first bolt. The new bolt should go one or two inches over the first bolt, then tape together firmly across the entire width of both wallcoverings. Make sure taped connection enters trough before pulling through.**

**When using 27" wallcovering, run it in the middle of the machine and use two sponges, 1 on each side of wallcovering, and keep paste in between the two sponges.**

Advance Equipment Mfg. Co.  
Chicago, IL 60651  
800-621-4516

Made in USA



- P1011, 1 1/2"X59 1/4" Squeegee for 56" Pull-Box (Front)
- P1012, Squeegee Brkt for 56" (channel front)
- P1013, Squeegee Brkt for 56" (flat back)
- P1014, Screw (squeegee brkt front 3/4") 14
- P1015, Screw (squeegee brkt back 1/2") 14
- P1020, PVC Front Panel for 56" Pull Box
- P1021, PVC Back Panel for 56" Pull Box
- P1022, 2 1/2"X59 1/4" Squeegee for 56" Pull-Box
- P1023, Clear Acrylic Door for 56" Pull Box
- P1024, Black Knob (w/screw) for Door
- P1025, \*Foam rubber for 56" Pull Box machine
- P1026, L-Clamp for 56" Pull Box Machine
- P1027, Left side end block for 56" Pull Box
- P1028, Right side end block for 56" Pull Box
- P1029, PVC 3-3/4" (for L clamp brkt)
- P1030, Bolt (1/4 x 1-1/2")
- P1031, Wing Nut 1/4"
- P1032, Washer (adjustment knob) 1"
- P1033, Adjustment Knob, (top black)
- P1034, Adjustment Channel 2-1/4" (cotter pin)
- P1035, Cotter Pin 3/32" x 1"
- P1041, Counter Base for 56" Pull Box
- P1050, Material Support Arm, (left)
- P1051, Material Support Arm, (right)
- P1054, Screw (bottom support brkt 1-3/16") 4
- P1670, Adjustment Screw 4 1/2" (top L/R)
- P1680, Support rod for 56" Pull Box, w/screw
- P1652, Material Shaft,5/8"x60 1/4"
- P1681, 56" Wood and Galvanized bottom support
- P1682, Bottom Support Brkt 13 1/4" left
- P1683, Bottom Support Brkt 13 1/4" Right
- P1684, Galvanized Roller 59" x 3/4"
- P1685, Insert 5/8" (for galvanized roller)
- P1686, Insert Screw 1" (for galvanized roller)
- P1687, Adjustment Brkt (bottom 3 1/2")
- P1688, Adjustment Brkt (bottom 4 1/2")
- P1689, Adjustment Brkt (bottom 1 3/8")
- P1690, Adjustment Screw (bottom 2 1/2")
- P1691, Thumb Screw (for P866)
- P1692, Drain Cap for 56" Pull Box Paste Machine
- P1693, Material Guide Disk (56" Pull-Box) (5/8")
- \*Not Shown