

MADE IN
U.S.A.



AMERICAN MANUFACTURING SINCE 1922



DRYWALL | WALLCOVERING | PAINTING

ADVANCE EQUIPMENT MANUFACTURING COMPANY PROUDLY MADE IN THE USA



TABLE OF CONTENTS

DRYWALL	Adjustable Wipedown Knives	4
	Circle Cutter	11
	Corner Trowels	9
	Floor Scrapers	13
	Hammers	11
	Knives, Aluminum Back	5
	Knives, Cool Grip	4
	Knives, Curved Blade	6
	Knives, Drywall	4-5
	Knives, Knockdown	6
	Knives, Off Set	4
	Knives, Slimline Textured Handle	5
	Knives, Textured Handle	5
	Lifters	8
	Mini Corner Tools	9
	Mixers	10
	Mortar Scraper	11
	Mud Masher	11
	Mud Pans	6-7
	Mud Pan Holder	7
	Pole Sponger	8
	Sanders	7-8
	Scarifier	11
	Tape Holder	7-11
Taping Banjo	12	
Utility Saw	7	
Wall Scrapers	13	

PAINTING	Brush Keeper	15
	Do-All Scraper	16
	Faux Finishing Tools	15-16
	Graining Tools	16
	Quiktruss Door Painting Stands	14
	Roller Cleaner	15
	Sander Head Adapter	15
	Spray Shields Pro Guard	14
	Swivel Pot Hook	15
	Tool & Brush Holder	15

WALLCOVERING	Aluminum Plates	20
	Border Paster	23
	Double Edge Blades	20
	Folding Paste Table	18
	Measuring Counter	23
	Non-Skid Trestles	19
	Paperhanging Outfits	19
	Paste Board Clamp	18
	Paste Board	19
	Paste Brush	19
	Paste Syringe	19
	Pasting Machines	21-23
	Paste Mate Accessories	23
	Razor Knife	20
	Seam Buster	20
	Seam Rollers	20
	Shears	20
	Smoothing Brush	19
	Straightedges	18
Vinyl Smoother	21	
Vinyl Trimmer	20	

RAMCO	Border Paster	25
	Lexan Smoothing Blade	24
	Measuring Counters	25
	Mini-Perforating Roller	24
	Pasting Machines	24-25
	Seam Rollers	24
	Shears	24
	Viking Machine	26

FIND A DEALER

www.advance-equipment.com



DRYWALL TOOLS

Doing a good job is easier when you use "the right tool!"



In this photo

A Page 6	Contoured Bottom Heliarc Mud Pans
B Page 4	Cool Grip II Taping Knives
C Page 7	Mud Pan and Tape Holder



MANUFACTURING EXCELLENCE SINCE 1922



COOL GRIP II TAPING KNIVES

CONTOURED SOFT GRIP HANDLES FOR COMFORT FOR DRYWALL PROFESSIONALS



Flexible blue spring steel, lacquer dipped or stainless steel held in aluminum rib. Soft overlay molded to newly designed smaller polypropylene handle is riveted directly to blade. Handle surface reduces hand moisture to improve your grip. Better ergonomics and less hand fatigue.

Blue Steel

36606	6 in.
36608	8 in.
36610	10 in.
36612	12 in.
36614	14 in.

Stainless Steel

37706	6 in.
37708	8 in.
37710	10 in.
37712	12 in.
37714	14 in.

COOL GRIP®

GROOVED HANDLE SURFACE REDUCES HAND MOISTURE TO IMPROVE YOUR GRIP



Flexible blue spring steel, lacquer dipped or stainless steel held in aluminum rib. Soft overlay molded to polypropylene handle is riveted directly to blade.

Blue Steel

36006	6 in.
36008	8 in.
36010	10 in.
36012	12 in.
36014	14 in.

Stainless Steel

37006	6 in.
37008	8 in.
37010	10 in.
37012	12 in.
37014	14 in.

OFF SET DRYWALL KNIVES



Innovative offset design, allows for better control and pressure. Stainless steel counter sunk rivets. Available in 0.20 thick blue tempered lacquer dipped spring steel, or polished stainless steel blade.

Blue Steel

OSG-8	8 in.
OSG-10	10 in.
OSG-12	12 in.
OSG-14	14 in.

Stainless Steel

OSG-8SS	8 in.
OSG-10SS	10 in.
OSG-12SS	12 in.
OSG-14SS	14 in.



ADJUSTABLE WIPEDOWN KNIVES

EASY, ADJUSTABLE ANGLE BLADE LOCK

HARDENED STAINLESS STEEL

NEW

This multi use longhandle wipedown knife features an adjustable angle blade attached to an 18 in. plastic handle threaded for an extension pole.

Adjustable Wipedown Knives

A 38007	7 in.
B 38011	11 in.

SLIMLINE TEXTURED PLASTIC HANDLE

NEW LIGHTWEIGHT,
SLIM VERSION OF THE
TEXTURED HANDLE
#34006 SERIES KNIFE



Flexible blue spring steel, lacquer dipped or stainless steel held in aluminum rib. Sturdy textured black handle is molded directly to the blade.

Blue Steel

34406	6 in.
34408	8 in.
34410	10 in.
34412	12 in.
34414	14 in.

Stainless Steel

35506	6 in.
35508	8 in.
35510	10 in.
35512	12 in.
35514	14 in.

TEXTURED PLASTIC HANDLE

MADE WITH THE
PROFESSIONAL IN MIND



Flexible blue spring steel, lacquer dipped or stainless steel held in aluminum rib. Sturdy plastic textured grey handle is molded directly to the blade.

Blue Steel

34006	6 in.
34008	8 in.
34010	10 in.
34012	12 in.
34014	14 in.

Stainless Steel

35006	6 in.
35008	8 in.
35010	10 in.
35012	12 in.
35014	14 in.

ALUMINUM BACK, LONG OR SHORT HANDLES

These Drywall Knives are made with the professional in mind. Flexible blue spring steel, lacquer dipped, held in aluminum mounting. Available with 16" wood handle or 6" broom threaded end plastic handle.



A Blue Steel Long Handle

AL14-4LH	14 in.
AL16-4LH	16 in.
AL18-4LH	18 in.
AL20-4LH	20 in.
AL24-4LH	24 in.

B Blue Steel - 6 Inch Plastic Threaded Handle

AL18-46P	18 in.
AL20-46P	20 in.
AL24-46P	24 in.

C Blue Steel - 18 Inch Plastic Threaded Handle

AL18-44	18 in.
AL20-44	20 in.
AL24-44	24 in.



TOOLS MADE
IN **AMERICA**
CREATE JOBS
IN **AMERICA**

ADVANCE FOR AMERICA



CURVED BLADE KNIVES



Flexible blue spring steel, lacquer dipped, held in aluminum mounting. Available with 16 in. (wood or plastic long handle) (CB) or 6 in. broom threaded end plastic handle (CB6P).

Blue Steel Long Handle

018-CB	18 in.
024-CB	24 in.
026-CB	26 in.

Blue Steel - 6 Inch Plastic Handle

018-CB6P	18 in.
024-CB6P	24 in.
026-CB6P	26 in.

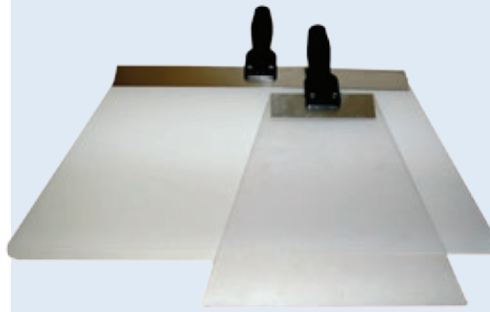
PLASTIC BLADED MUD PANS



Heavy duty 12 in. and 14 in. Plastic Mud Pan. Two steel blades on edge of pan to clean your blade. Comfortable 2¾ in. bottom with textured sides to prevent slippage.

12P	12 in.
14P	14 in.

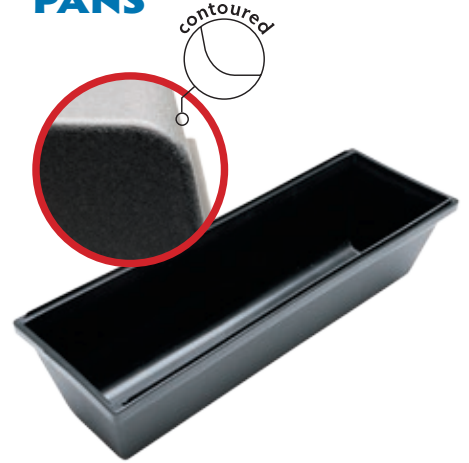
KNOCKDOWN KNIVES



Clear polycarbonate that is flexible and durable, with ½" radius corners for seamless application. Ideal for drywall, EIFS, acoustical work and a wide variety of textures. 6" plastic handle with a broom threaded end for an extension pole.

K12	12 x 12 in.
K18	18 x 12 in.
K24	24 x 12 in.
K36	36 x 12 in.

COUNTOURED PLASTIC MUD PANS



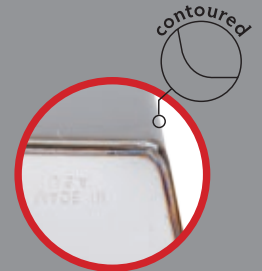
Heavy duty 12 in. and 14 in. Plastic Mud Pan with contoured bottom. Two steel blades on edge of pan to clean your blade.

Contoured bottom fits naturally in the hand, textured side to prevent slippage.

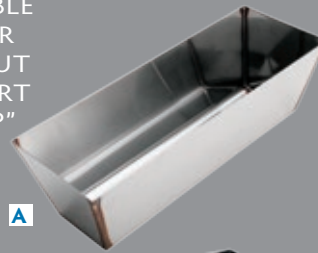
12PR	12 in.
14PR	14 in.

CONTOURED BOTTOM HELIARC MUD PANS

Smooth tapered ends and sides. Heliarc weld prevents leaking. Top edge sheared to clean knife. Smooth contoured bottom fits naturally in the hand, allows material to be scooped from the pan cleanly and easily.



AVAILABLE WITH OR WITHOUT COMFORT "NO SLIP" GRIP!



A Contoured (Non-grip)

10HR	10 in.
12HR	12 in.
14HR	14 in.



B Contoured w/ "No Slip" Grip

10HRG	10 in.
12HRG	12 in.
14HRG	14 in.

Contoured bottom fits naturally in the hand, textured side to prevent slippage.

HELIARC MUD PANS



Our signature, and most popular, mud pan. Smooth tapered ends and sides. Heliarc weld prevents leaking. Top edge sheared to clean knife easily. 14 in. Plastic Mud Pan. Two steel blades on edge of pan to clean your knife. Comfortable 2. in. bottom with textured sides.

Stainless Steel

10H	10 in.
12H	12 in.
14H	14 in.
16H	16 in.
18H	18 in.
24H	24 in.

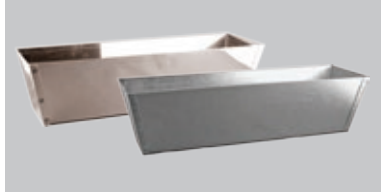


UNIVERSAL SANDER

Strong, but light weight aluminum base, strongly bonded rubber pad, wing nuts tighten sand paper clamps; 9 $\frac{3}{8}$ in. x 3 $\frac{1}{4}$ in. Male threaded swivel head allows you to reach all corners. Available with 4 ft. metal or wood pole. (Imported)

K-318	Universal Sander w/4 ft. metal handle
K-318W	Universal Sander w/4 ft. wood handle
K-318H	Universal Sander head only

SPOT WELD MUD PANS



Tapered ends and sides. Spot welded. Sides sheared to clean knife easily.

Available in both Galvanized or Stainless Steel.

Galvanized

8G	8 in.
10G	10 in.
12G	12 in.
14G	14 in.
16G	16 in.
18G	18 in.
20G	20 in.
22G	22 in.
24G	24 in.

Stainless Steel

8SS	8 in.
10SS	10 in.
12SS	12 in.
14SS	14 in.
16SS	16 in.
18SS	18 in.
24SS	24 in.

UTILITY SAW



Hardened and tempered steel blade with bevel filed teeth of special design to prevent clogging. Blade 6 in., overall 10 in. (Imported)

US21	Utility Saw
-------------	-------------



MUD PAN AND TAPE HOLDER

All aluminum, light-weight construction, hooks to belt where you can easily scoop mud from the pan and hands stay free to work. The hook below pan will hold a roll of tape. Pan and Tape not included.

PH12	Mud Pan and Tape Holder
-------------	-------------------------



BORN IN 1922
AND MADE
IN **AMERICA**
TO THIS DAY

ADVANCE FOR AMERICA

THERMOPLASTIC DRYWALL SANDERS



Injection molded from reinforced tri-polymer thermoplastic resin for heavy-duty use. 9 in. x 3¼ in.

3200	Tri-poly Thermoplastic Pole Sander Head
3210	Tri-poly Thermoplastic Hand Sander
WPT	4 ft. Wood Pole - Acme Thread for #3200

HAND SANDER WITH WOOD HANDLE



441 Hand sander with wood handle and aluminum base

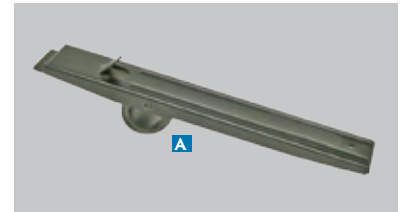
POLE SPONGER



Sanding sponger Reversible 4 in. x 9 in. x 3/4 in. sanding sponge lasts 25 times longer than sandpaper. One sponge will do a 26,000 sq. ft. area can be used wet or dry. (Imported)

A PS-318	Pole Sponger -Male threaded head and sponge (Imported)
B PS-318S	Pole Sponger -Sponge only medium (80) grit (PS-318 and PS-319)
PS-320S	Pole Sponger -Sponge only fine (120) grit (PS-318 and PS-319)
C PS-319	Pole Sponger - Female threaded head and sponge (Imported)
D SH4	Metal Handle, 4 ft.
SH5	Metal Handle, 5 ft.
WSH	Replacement Wood Pole, 4 ft.

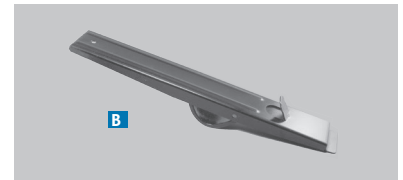
DRYWALL LIFTERS



Roll Lifter

Allows one man to lift board up to 3 inches, heavy steel construction, ribbed back stiffens lifter. Roller-wheel moves board against wall. Durable powder coat finish.

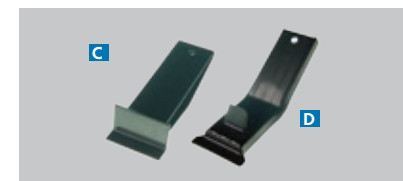
RL93 Roll Lifter



Ridged Lifter

Allows one man to lift board up to 3 in. heavy steel construction, ribbed back stiffens lifter. Fixed fulcrum lifts board against wall. Durable powder coat finish.

RL94 Ridged Lifter



Mini Lifters

Lifts and holds drywall sheet in place while nailing or using screw gun. Welded steel construction. Fits in pocket or tool belt. Durable powder coat finish.

ML94 Mini Lifter

ML95 Mini Lifter

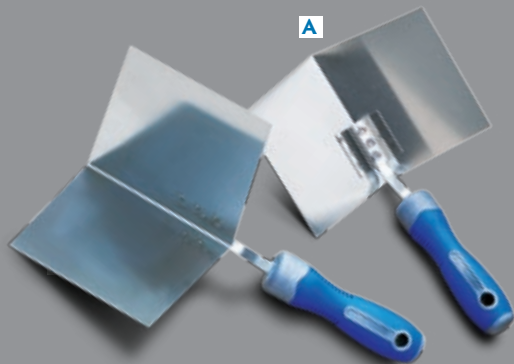
COOL GRIP II DRY WALL CORNER TROWELS

Contoured Stainless Steel

A 222SS	Inside	Cool Grip II Handle		4 ½ in. x 4 in.
B 214SC	Inside	Cool Grip II Handle		4 ½ in. x 2 in.
C 214BSC3/4	Inside	Cool Grip II Handle	Bullnose ¾ in. radius	4 ½ in. x 2 in.

Contoured Stainless Steel

D 223SS	Outside	Cool Grip II Handle		4 ½ in. x 4 in.
E 215SC	Outside	Cool Grip II Handle		4 ½ in. x 2 in.
F 215BSC3/4	Outside	Cool Grip II Handle	Bullnose ¾ in. radius	4 ½ in. x 2 in.



PLASTIC INSIDE & OUTSIDE MINI CORNER TOOLS



Comfortable "easy-grip" molded plastic handle. Shown in clear thermoplastic.

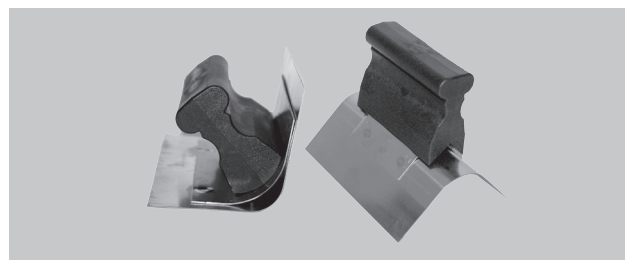
Inside Plastic

210PL1/8	1/8 in. Radius	2 in. x 2 in. x 4 in.
210PL1/4	1/4 in. Radius	2 in. x 2 in. x 4 in.
210PL3/8	3/8 in. Radius	2 in. x 2 in. x 4 in.
210PL1/2	1/2 in. Radius	2 in. x 2 in. x 4 in.
210PL3/4	3/4 in. Radius	2 in. x 2 in. x 4 in.

Outside Plastic

211PL1/8	1/8 in. Radius	2 in. x 2 in. x 4 in.
211PL1/4	1/4 in. Radius	2 in. x 2 in. x 4 in.
211PL3/8	3/8 in. Radius	2 in. x 2 in. x 4 in.
211PL1/2	1/2 in. Radius	2 in. x 2 in. x 4 in.
211PL3/4	3/4 in. Radius	2 in. x 2 in. x 4 in.

STAINLESS INSIDE & OUTSIDE MINI CORNER TOOLS



Comfortable "easy-grip" molded plastic handle. Shown in Stainless Steel.

Inside Stainless Steel

210SS90	90 Degree	2 in. x 2 in. x 4 in.
210SS1/8	1/8 in. Radius	2 in. x 2 in. x 4 in.
210SS1/4	1/4 in. Radius	2 in. x 2 in. x 4 in.
210SS3/8	3/8 in. Radius	2 in. x 2 in. x 4 in.
210SS1/2	1/2 in. Radius	2 in. x 2 in. x 4 in.
210SS3/4	3/4 in. Radius	2 in. x 2 in. x 4 in.

Outside Stainless Steel

211SS90	90 Degree	2 in. x 2 in. x 4 in.
211SS1/8	1/8 in. Radius	2 in. x 2 in. x 4 in.
211SS1/4	1/4 in. Radius	2 in. x 2 in. x 4 in.
211SS3/8	3/8 in. Radius	2 in. x 2 in. x 4 in.
211SS1/2	1/2 in. Radius	2 in. x 2 in. x 4 in.
211SS3/4	3/4 in. Radius	2 in. x 2 in. x 4 in.

TORNADO POWER MIXERS

FASTER, EASIER CLEANING BLADE! NO PAIL GOUGING!

For mixing of paint, mud, texture, This high-tech, durable polypropylene mixing paddle, eliminates bucket/pail gouging due to polypropylene on plastic mixing. Easy flow design allows for smooth and proper mixing without lumps. Pivoting paddle acts as a squeegee to pull material off the sides of bucket while mixing material in an upward motion. Compound cleans off high-tech plastic easier and faster than traditional mixer.



Tornado Power Mixer

EC28	Pivot Blade w/28 in. shaft
EC28F	Fixed Blade w/28 in. shaft
EC36	Pivot Blade w/36 in. shaft
EC36F	Fixed Blade w/36 in. shaft

DRYWALL MIXERS

Fan Blade Mixers

Available in Adjustable or Fixed position. Zinc plated, welded to a non-slip steel hexagon shaft for durability, 3/8 in. hex, 24 in. shaft for 1/2 in. slow speed drill.

FM24	2 Fan Blade Mixer w/24 in. shaft - Fixed Blade
FM24A	2 Fan Blade Mixer w/24 in. shaft - Adjustable
FM34	3 Fan Blade Mixer w/24 in. shaft - Fixed Blade
FM34A	3 Fan Blade Mixer w/24 in. shaft - Adjustable



Boomerang Mixer with Pail Saver Tip

Radius on leading edge helps prevent pail gouging. Heavy duty 28 inch 7/16 hex shaft. Mixes inward from top to bottom to prevent splashing. Pail Saver Tip eliminates pail gouging.



BR716	7/16 in. hex shaft by 28 in. shaft length. 3/8 in. radius on bottom of shaft to prevent pail gouging
BR44	7/16 in. hex shaft by 44 in. shaft length

Eggbeater Mixer

Yellow zinc plated solid steel. Heavy duty 28 in. 3/8 in. hex shaft. Mixer is used with 1/2 in. drill for slow mixing speeds. Mixes thin set, grout and concrete.

EB28	3/8 in. hex shaft by 28 in. shaft length
-------------	--



Easy Mixers

For mixing of paint, mud, texture, cement, etc. Zinc plated to resist rust. With 3/8 in. hex shaft for 1/2 in. slow speed drill. Pail Saver Tip eliminates pail gouging.

EM94	Easy Mixer w/28 in. shaft
EM95	Easy Mixer w/36 in. shaft
EM94H	Easy Mixer w/28 in. shaft w/ Pail Saver Tip
EM95H	Easy Mixer w/36 in. shaft w/ Pail Saver Tip



EM94



CIRCLE CUTTER



Calibrated steel shaft gives sharp, clean cuts up to 16 in. in diameter. Cutting blade and center point are hardened for long life. (Imported)

AC31 | 16 in. Circle Cutter

MUD JAM CLEAR TOOL

NEW



For use with Automatic Taper. Easily clears paper jams or mud jams in tape guide.

34491 | Mud Jam Clear Tool

DRYWALL PAIL SCOOP



Radius on blade allows total removal of drywall mud, mortar, grout, stucco and cement from pail. Stainless steel blade held in aluminum rib. Sturdy textured handle is molded directly to the blade.

38406 | Drywall Pail Scoop

MUD MASHER

HAND-HELD MASHER



5 in. square head made of heavy chromed steel wire. Wood handle, 24 in. long. For small batch mud mixing. (Imported)

MM6 | Mud Masher | 24 in.

MORTAR SCRAPER



Cold rolled steel robotic welded to steel base. Comfortable wood handle attached to steel base. Mortar scraper is used to clean dried excess mortar off the face of bricks.

MS200 | Mortar Scraper

DRYWALL HAMMERS



12 oz., forged, heat treated, steel head. Crowned, serrated face designed to set nails in a precise "dimple". 12 in. clear hardwood handle.

DW12 | 12 oz. 12 in. handle

DW16 | 12 oz. 16 in. handle

SCARIFIER

PLASTIC OR COOLGRIP HANDLE

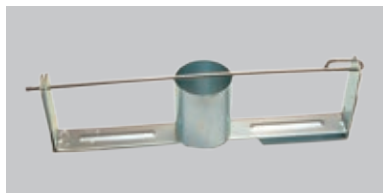


Made of steel tines and lightweight. Soft overlay molded to polypropylene handle is riveted directly to the blade.

36112 | 12 in. Blue Steel - Cool Grip handle

36114 | 14 in. Blue Steel - Cool Grip handle

TAPE HOLDERS



Steel tape holder plated to resist rust. Holds up to 500 ft. roll tape. Hooks on belt.

TH50 | Tape Holder

NEW



Tape roll fits snugly on adjustable, tape tension hub. Steel tape holder plated to resist rust. Holds up to 500 ft. roll tape. Hooks on belt.

TH57 | Tape Holder w/ Tension Hub

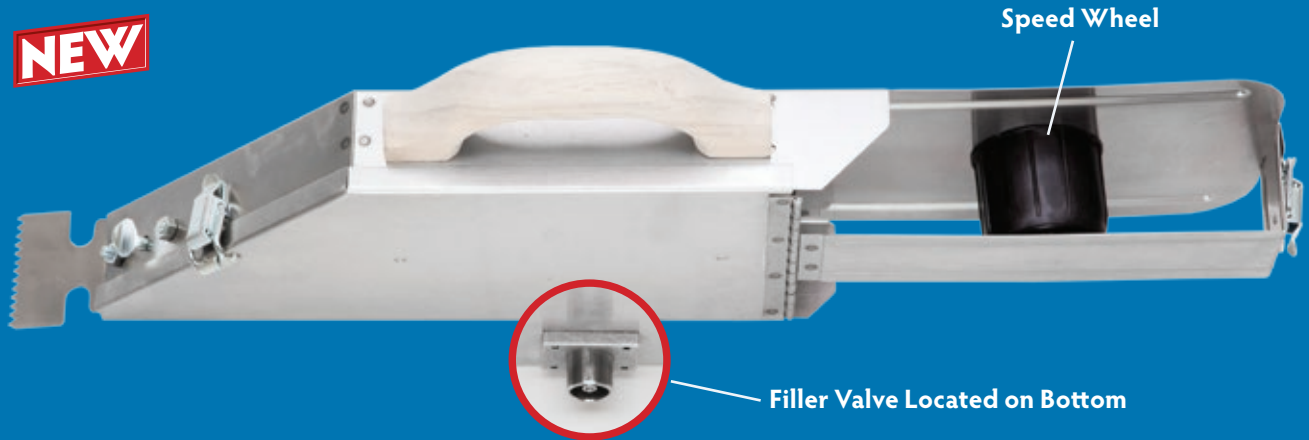
BANJOS



STAINLESS STEEL RAPID FILL TAPING BANJO

NEW FILLER VALVE ALLOWS FOR FILLING WITH LOADING PUMP

NEW



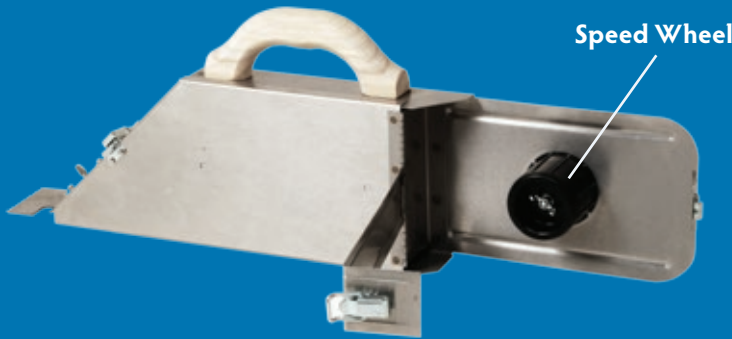
All the same great features as our S.S. Taping Banjo (see below), our Stainless Steel Rapid Fill Taping Banjo includes a bottom mounted Filler Valve that allows for quick filling with a standard automatic taping tools loading pump and filler. Quickly fill without opening the door!

Exclusive Speed Wheel feature allows for tension preference on tape delivery. Holds 500 foot roll of tape.

4618 | Stainless Steel Rapid Fill

STAINLESS STEEL TAPING BANJO

STAINLESS STEEL FOR YEARS OF DEPENDABLE USAGE



Made of stainless steel. Speed Wheel is adjustable to your tension preference. Thumb screw for mud adjustment. Complete with wood handle. Holds 500 foot roll of tape. Adjustable strap with thumb rest. Right or left handed. Tape fits securely on adjustable tension spool.

- Tension controlled with locking wing nut to adjust flow without backspin
- Tape flows smoother

4617 | Stainless Steel

ALUMINUM TAPING BANJO

LIGHTWEIGHT



Made of aluminum, very lightweight. Thumb screw for mud adjustment. Wood handle and web strap. Holds 500 foot roll of tape. Right or left handed.

4615 | Aluminum

FLOOR SCRAPERS



Fixed Handle

Has 5 ft. steel handle welded to heavy steel mounting bracket, plastic grip on end. Replaceable spring steel blade.

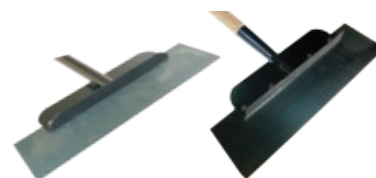
F7	7 in.
F7B	Replacement Blade
F14	14 in.
F14B	Replacement Blade
F20	20 in.
F20B	Replacement Blade



Detachable Handle

Has 5 ft. detachable steel handle that attaches easily to heavy duty steel mounting bracket, plastic grip on end. Blade made of spring steel.

FD14	14 in. Detachable 5 ft. metal handle
FD18	18 in. Detachable 5 ft. metal handle
FD22	22 in. Detachable 5 ft. metal handle



Heavy Duty Wood or Metal Powder Coated Handles

FP14	14 in. with 5 ft. metal handle
FP14B	14 in. replacement blade
FP14W	14 in. with 5 ft. wood handle
FP18	18 in. with 5 ft. metal handle
FP18B	18 in. replacement blade
FP18W	18 in. with 5 ft. wood handle

WALL SCRAPERS



Spring steel blade bolted to aluminum angle mounting attached to 4 ft. steel or wood handle, with plastic grip. Blade has right temper for perfect wall cleaning or scraping. In 18, 22 and 24 in. widths.

Fixed Handle

WS18	18 in. Wall Scraper	metal handle
WS18W	18 in. Wall Scraper	wood handle
WS18B	18 in. Replacement Blade	spring steel
WS22	22 in. Wall Scraper	metal handle
WS22W	22 in. Wall Scraper	wood handle
WS22B	22 in. Replacement Blade	spring steel
WS24	24 in. Wall Scraper	metal handle
WS24W	24 in. Wall Scraper	wood handle
WS24B	24 in. Replacement Blade	spring steel



Detachable Handle

Wood handle. Spring steel blade bolted to aluminum mounting attached to 4 ft. wood pole.

WS22PW	22 in. Wall Scraper
WS22PWB	Replacement Blade

PAINTING TOOLS

PRO GUARD SPRAY SHIELDS

Advance offers five types of professional grade Pro Guard Spray Shields each differing in blade type and width, frame type and handle type.

ALUMINUM - PLASTIC BACK
Aluminum Shield with riveted plastic extrusion has front & back run-off edge.

ALUMINUM FOLDED
One-piece double fold design forms a more rigid aluminum shield with front drip ridge run-off.

ALUMINUM FOLDED BENT
Bent leading edge adds additional stiffness to shield.

STYRENE - PLASTIC BACK
Aluminum Shield with riveted plastic extrusion has front & back run-off edge.

STYRENE - ALUMINUM BACK
Aluminum Shield with riveted plastic extrusion has front & back run-off edge.



Aluminum - Bulk Six Pack

02243	24" Alum. Plastic Back, No Thread Handle
A 02244	24" Alum. Plastic Back, Thread Handle
02363	36" Alum. Plastic Back, No Thread Handle
02364	36" Alum. Plastic Back, Thread Handle
04243	24" Alum. Folded, No Thread Handle
04244	24" Alum. Folded, Thread Handle
B 04363	36" Alum. Folded, No Thread Handle
04364	36" Alum. Folded, Thread Handle
05243	24" Alum. Folded Bent, No Thread Handle
05244	24" Alum. Folded Bent, Thread Handle
C 05363	36" Alum. Folded Bent, No Thread Handle
05364	36" Alum. Folded Bent, Thread Handle

Styrene - Bulk Six Pack

03243	24" Styr. Plastic Back, No Thread Handle
D 03244	24" Styr. Plastic Back, Thread Handle
03363	36" Styr. Plastic Back, No Thread Handle
03364	36" Styr. Plastic Back, Thread Handle
06243	24" Styr. Alum. Back, No Thread Handle
E 06244	24" Styr. Alum. Back, Thread Handle
06363	36" Styr. Alum. Back, No Thread Handle
06364	36" Styr. Alum. Back, Thread Handle

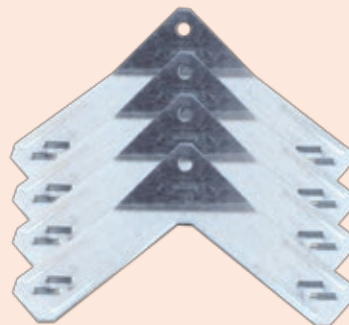
Aluminum & Styrene - Zip-tied Six Packs are also available. Handles are attached to spray shields with two zip ties. Simply add a T to the end of the item number (i.e. change 02243 to 02243T) when ordering.



QUICKTRUSS DOOR PAINTING STANDS

A useful tool that stands doors up securely so both faces and ends can be prepped and painted at the same time.

Q300 | Door Painting Stands (Carded in 4pks)



EASY TO SET UP

BRUSH KEEPER



Has easy lift-out unit which can be lifted up to anchor in top of box for easy drain-out without spilling. Made of heavy rustproof steel, welded and soldered. Has recessed bottom to prevent wear through. Attractively finished in bright red.

6	Holds 6 brushes
10	Holds 10 brushes

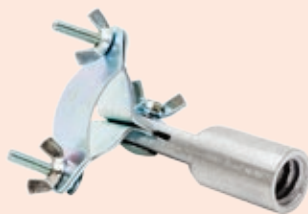
SWIVEL POT HOOK



Pointed hook with swivel joint and snap hook. (Import)

608	Swivel Pot Hook
-----	-----------------

TOOL & BRUSH HOLDER



Adjustable to any angle and fits on any threaded pole. Threaded multi-purpose to hold paint brush, wire brush, scraper, etc.

230	Holds brushes
-----	---------------

SANDER HEAD ADAPTER



Converts broom handle thread to fit Universal Sander.

12A	Sander Head Adapter
-----	---------------------

ROLLER CLEANER



For removing paint or solvent. Safe rolled edge will not cut wool or other covers. Offset head keeps paint off your hands and handle.

601/48	Carded (48)
601/50	Bulk Display Box (50)



FAUX FINISHING BRUSHES

Create an endless variety of textures and patterns. (Imported)

910	Badger Hair Softener	1½ in.
911	Flogger	2 in.
912	Synthetic Softener	3 in.
913	Hog Hair Softener	3 in.
914	Badger Hair Softener	3 in.
916	Stippling Brush	4 in. x 1 in.
917	Stippling Brush	4 in. x 3 in.

GRAINING TOOLS

QUARTER ROUND



Valuable and handy tool produces beautiful heart grain wood effects. Rubber corrugation mounted on quarter round block.

104	3 in. plastic quarter round
107	5 in. plastic quarter round

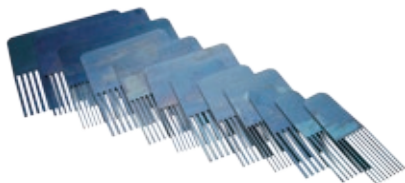
GRAINING ROLLER W/ HANDLE



Rubber roller on wood core set in wire frame.

315	5 in. Wire handle
------------	-------------------

GRAINING COMBS - 12 PC. STEEL



Made of blue steel. Fine, medium and coarse combs in 1 in., 2 in., 3 in., 4 in. widths. Set packed in individual box.

134	Steel graining comb set
------------	-------------------------

GRAINING COMBS



Graining Comb Triangle

A 102	Rubber
B 106	Fine, medium and coarse teeth set in solid molded rubber.

Graduated Comb

C 105	5 in. solid rubber.
--------------	---------------------

CHECK ROLLERS



This tool is used to create vertical straight line random check marks in the oak grain, giving the look of realistic pores.

135	2 in.
136	3 in.
137	4 in.

3 GRAINING COMB SET



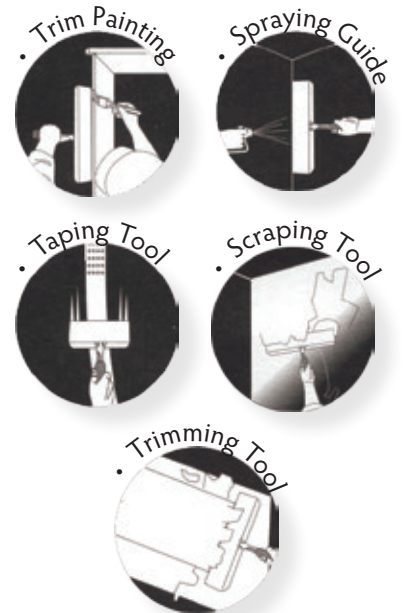
903	Rubber, set in 9 in. wood strips. Same teeth as No. 102.
------------	--

DO-ALL SCRAPER



Sturdily made of heavy gauge plated tempered steel, 4 in. blade is beveled. Instructions included.

DA-12	12 in.
DA-20	20 in.
DA-30	30 in.



GRAINING ROLLERS



Set consists of three different design rubber rollers to create different graining effects. 5 in. long, 1½ in. diameter. Three piece set with two foam cores in poly bag with header.

303	3 roll set (incl. Foam Core)
------------	------------------------------

WALLCOVERING TOOLS

PRODUCING **HIGH QUALITY WORK** IS EASY WHEN YOU USE THE **PASTE-MATE** FROM **ADVANCE EQUIPMENT.**

62 IN. & 40 IN. HEAVY DUTY PASTE MACHINES

THE NAME IN PASTE MACHINES

Manual, gear driven pasting machine for heavier materials up to 62 inches wide. Stainless steel tank with two removable and three fixed rollers. Paste roller is hard coat anodized for ultimate protection. Rolling Stand, adjustable in height, has 4 in. industrial locking casters. Legs fold under machine for easy transport. Has a drain plug for quick clean-up. Also, has measuring counter complete with stainless steel bracket and 2 gear wheels.

B562-HD pictured with optional Transportation Shelf () and Booking Table ().

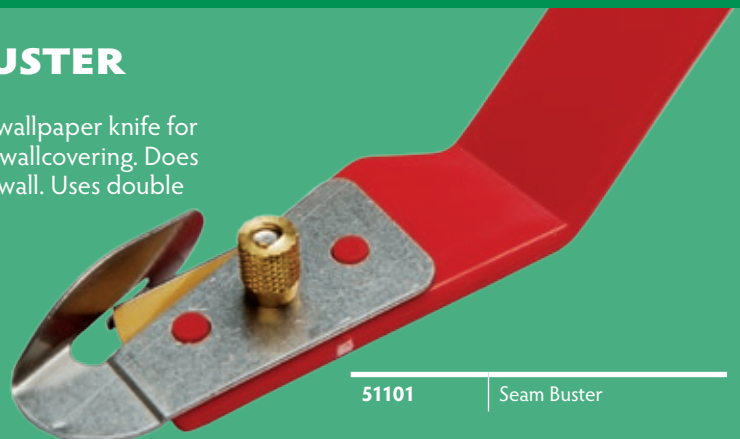
50621	B562-HD 62 in. Paste Machine complete with rolling stand and counter #51114.
50401	B540-HD 40 in. Paste Machine complete with rolling stand and counter #51114.
540TS	40 in. Transportation Shelf
562TS	62 in. Transportation Shelf
540BT	40 in. Booking Table
562BT	62 in. Booking Table

MORE
ON PAGES
22-23



SEAM BUSTER

Double cutting wallpaper knife for vinyl and fabric wallcovering. Does not cut into drywall. Uses double edged blade.



51101

Seam Buster

STRAIGHTEDGES



Always true, accurate, and will not warp. Use with razor blade or razor knife for trimming vinyl and fabric backed wallcoverings.

Aluminum

300-2	2.5 ft. with track
300-3	3 ft. with track
300-4	4 ft. with track
300-5	5 ft. with track
300-6	6 ft. with track
300-7	7 ft. with track
300-8	8 ft. with track

Magnesium

500-2	2.75 ft. with track
500-6	6 ft. with track
500-7	7 ft. with track
500-8	8 ft. with track

Aluminum Brass Bound

400-6	6 ft. with brass track
400-7	7 ft. with brass track

ALUMINUM STRAIGHTEDGE WITH HANDLE



The easy grip plastic handle makes this aluminum straightedge ideal for double cutting material on the wall.

300-3H	3 ft. with float type handle
300-4H	4 ft. with float type handle
300-5H	5 ft. with float type handle
300-6H	6 ft. with float type handle

PASTE BOARD CLAMP



Bright plated steel, designed to hold 3 paste boards, straightedge, trestles, and yardstick.

124	Paste Board Clamp, adjustable, pair
------------	-------------------------------------

FOLDING PASTE TABLES

Top and frame are made of clear basswood securely glued and stapled together. Hardwood legs, reinforced with steel brace spreaders, fold easily when not in use. Equipped with straightedge rests. Straightedge and tools can be stored inside. Tables are 33 in. high, and tops are 5/8 in. thick basswood, Available in 5 , 6 and 7 ft. lengths by 24 or 36 in. widths. Includes carrying handle. (tools not included)

12 in. closed, 24 in. open

30-6	6 ft. Table	
30Z-6	6 ft. Table	aluminum plate
30Z-7	7 ft. Table	aluminum plate

16 in. closed, 32 in. open

35Z-5	5 ft. Table	aluminum plate
36-6	6 ft. Table	
36Z-6	6 ft. Table	aluminum plate
37Z-7	7 ft. Table	aluminum plate

(Z) Tables have a 3 in. wide flush mounted, aluminum plate along top edge for trimming wallcovering.





PASTE BOARDS

Made of clear basswood which, over the years, has proved to be the finest wood for this purpose. All have tongue and groove batten ends, doweled connections.

Doweled - (3) 11 in. boards per set = 33 in. wide.

12-3-5	1/2 in. x 5 ft. set
12-3-6	1/2 in. x 6 ft. set
58-3-5	5/8 in. x 5 ft. set
58-3-6	5/8 in. x 6 ft. set
58-3-7	5/8 in. x 7 ft. set
34-3-5	3/4 in. x 5 ft. set
34-3-6	3/4 in. x 6 ft. set
34-3-7	3/4 in. x 7 ft. set

Doweled - (4) 10 in. boards per set = 40 in. wide.

34-4-6	3/4 in. x 6 ft. set
--------	---------------------

SMOOTHING BRUSH



Wood handle, with 100% tapered black DuPont Tynex Nylon, fastened with stainless steel strip. 12 inches wide.

20693	1 7/8 in. by 12 in. Dupont Tynex Nylon
20694	1 1/2 in. by 12 in. Dupont Tynex Nylon

NON-SKID TRESTLES



Made of hard maple, height adjustable from 30 to 35 in. Equipped with straightedge rests. All metal parts bright zinc plated and rubber tipped legs. Top rail has corrugated rubber strip morticed into wood to keep boards from slipping.

15NS	Trestles, non-skid 36 in. top
15NS40	Trestles, non-skid 40 in. top

PASTE SYRINGE



Used to inject paste into loose spots and bubbles.

20743	1 ounce capacity
-------	------------------

PASTE BRUSH



100% Tapered Nylon. Flat trim, clear hardwood handle.

9250	6 in. x 3 1/2 in. nylon
------	-------------------------

PAPERHANGING OUTFITS

Professional paperhanging package consists of:

- Basswood Boards 3/4 in. x 11 in. doweled. (3 each = 33 in. wide)
- Non-Skid Trestles (1 pair)
- Aluminum Straightedge (1 each)
- Wood Yardstick (1 each)
- Paste Board Clamps (1 pair)

315-5	5 ft. Professional Paperhanging Outfit
316-6	6 ft. Professional Paperhanging Outfit
317-7	7 ft. Professional Paperhanging Outfit



SEAM BUSTER



Double cutting wallpaper knife for vinyl and fabric wallcovering. Does not cut into drywall. Uses double edged blade.

51101 | Seam Buster

SHEARS



11 in. Stainless Steel shears w/plastic handle. (Imported)

1085/11 | Shears

RAZOR KNIFE



Sturdy wood handle, uses standard single edge razor blades. (Imported)

69-B | Razor Knife

DOUBLE EDGE BLADES



Double edge razor blades, hardened super-sharp, long lasting. Fits Seam Buster. (Imported)

51102 | Per 200

VINYL TRIMMER



Made of cast aluminum for professional use on vinyl material. Uses standard single edge blade and will give a virtually invisible seam.

V30/30 | Vinyl Trimmer

SEAM ROLLERS



Plastic Rollers

693	1½ in. flat
694	2 in. flat
695	2 in. oval



Heavy duty hardwood handle with steel, plastic, or rubber roller mounted with heavy nickel plated frame.

Stainless Steel Rollers

684	Nylon bearing	2 in. flat
685	Nylon bearing	1½ in. flat
686	Nylon bearing	1½ in. side arm



Rubber Roller

794	Vinyl covered	2 in. flat
------------	---------------	------------



Plastic Corner Roller

93B	1 in. bevel	side arm
------------	-------------	----------

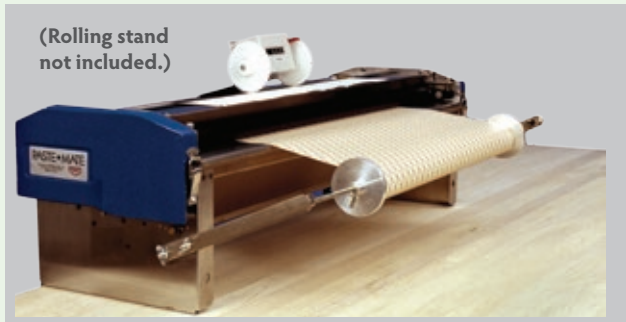
ALUMINUM PLATES

Aluminum Plates designed extra heavy.

ZP-6	Aluminum Plate	3 in. x 6 ft.	1/16 in. thick
ZP-7	Aluminum Plate	3 in. x 7 ft.	1/16 in. thick



30 IN. HEAVY DUTY TABLE TOP (SHOWN WITH MEASURING COUNTER)



(Rolling stand not included.)

Manual, gear driven Pasting Machine for heavier materials up to 30 in. wide. Stainless steel tank with two removable and three fixed rollers. Paste roller is hard coat anodized for ultimate protection. Also, has measuring counter complete with stainless steel bracket and 2 gear wheels. Has a drain plug for quick clean-up.

50300	30 in. Paste Machine
50301	30 in. Paste Machine w/Counter #51114

56 IN. PULL BOX



(Shown with measuring counter.)

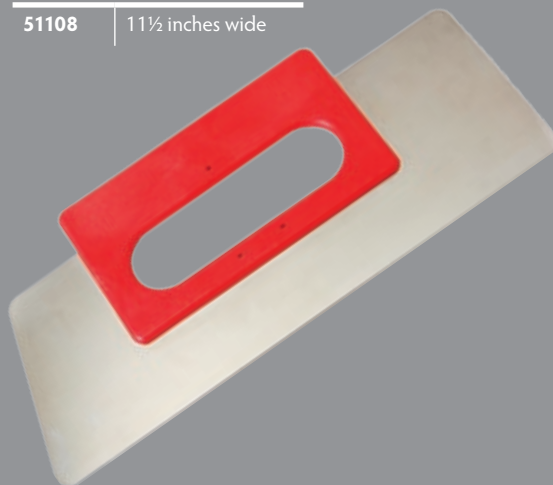
Economical model pasting machine with simple operation and leak-free design. Uniform paste distribution can be easily adjusted for more or less paste in center of wallcovering. Applies clay or clear adhesives, and has a drain plug for quick clean-up. Attaches easily to any paste table. Table-top model. (Table not included with machine.)

51561	56 in. Pull Box w/Counter #51126
-------	----------------------------------

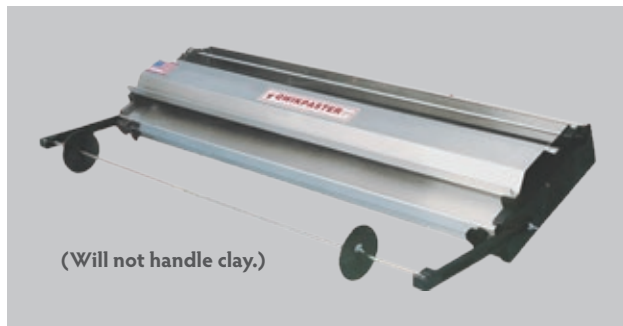
STAINLESS VINYL SMOOTHER & TRIMMER

HARDENED STAINLESS STEEL, COMFORTABLE GRIP

51108	11½ inches wide
-------	-----------------



30 IN. QWIKPASTER



(Will not handle clay.)

30 in. table top pasting machine. Precision turned, anodized aluminum paste roller sits in stainless steel tank which holds 1½ gallons of paste and has plastic drain plug for easy clean up. Knife guide slot on stainless steel lid for exact cuts. Regulating knobs allow fine adjustment of paste application. For clear adhesives or prepaste activator ONLY!

51130	30 in. Qwikpaster
51131	30 in. Qwikpaster w/Counter #51125

PASTE-MATE FOR PROFESSIONALS



HEAVY DUTY PASTE MACHINES

THE NAME IN PASTE MACHINES

Pasting Machines

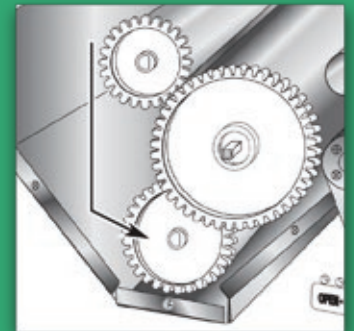
50301	30 in. Table Top Model w/ Counter
50401	40 in. w/ Rolling Stand & Counter
50621	62 in. w/ Rolling Stand & Counter

For Heavy-duty Materials Up to 62 Inches Wide.

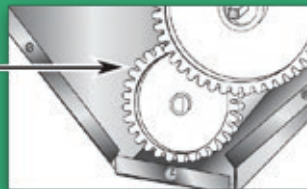
- Height adjustable chrome rolling stand with 4" casters
- Deep stainless steel tank with two removable and three fixed rollers
- Use with vinyl, grasscloth, string, burlap, suede and more.
- Stand with material supports folds under tank for fast set-up.
- Models 50401 and 50621 include Rolling Stand and Measuring Counter.
- Model 50301 Table Top Model comes with Measuring Counter.
- Optional Booking Table available.



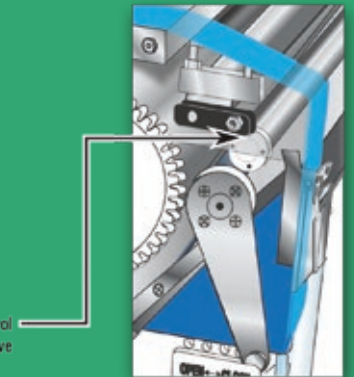
Gear driven rollers provide consistent, even distribution of paste roll after roll.



Exclusive pick-up roller pulls paste efficiently, evenly, from high capacity tank. Tank will allow one 30 yard bolt to be pulled without adding paste



Stainless steel paste adjustment roller allows better control over the amount and flow of paste which prevents adhesive from touching or staining the face of the wall covering.





PASTE-MATE ACCESSORIES

Fiberboard core with 1/4" top-coated Melamine panel. For storage of 30, 56, or 62 inch machines (specify size). Stores Pasting Machine, rolling stand, and booking table.



Paste Machine Storage Cases

51308	30 in. Storage Case, Quikpaster
51338	30 in. Storage Case
51408	40 in. Storage Case
51628	62 in. Storage Case

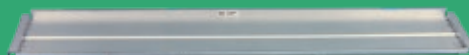
Rolling Stands

530RS	30 in. Rolling Stand only
540RS	40 in. Rolling Stand only
556RS	56 in. Rolling Stand only
562RS	62 in. Rolling Stand only



Booking Tables (Basswood Boards 3/4 in. x 11 in. wide x2)

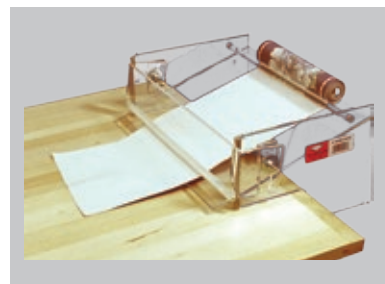
530BT	30 in. Booking Table
540BT	40 in. Booking Table
556BT	56 in. Booking Table
562BT	62 in. Booking Table



Transportation Shelves

530TS	30 in. Transportation Shelf
540TS	40 in. Transportation Shelf
556TS	56 in. Transportation Shelf
562TS	62 in. Transportation Shelf

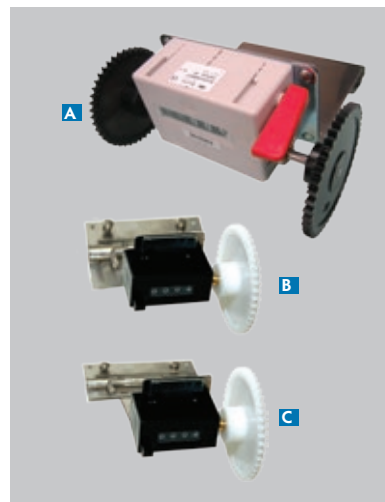
BORDER PASTER



The professional's choice. Use with up to 12 in. wide borders and heavier adhesives. Eliminates the curling of tightly wrapped rolls. Simple design easy to clean, no maintenance needed.

51107 | 12 in.

MEASURING COUNTERS



A Heavy Duty

51114 | Two gear wheels and stainless steel bracket, for Paste-Mate machines #50621 and #50300

B Pull Box

51126 | Single wheel and bracket complete.

C Quikpaster

51125 | Single wheel and bracket complete.

62 IN. DELUXE RAMCO PASTE-MASTER

Comes complete with:
All-in-one aluminum cart/case/
stand, scraper bar, booking
table, inch meter.

PM62DX | 62 Inch Deluxe



MINI-PERFORATING ROLLER

Prepares all wallcoverings including heavy vinyl for removal. Patented angled brass rollers with steel pins, perforate and provide angle tears in wallcovering. Allows steamer or stripping solutions to effectively penetrate or dissolve adhesive. 6 in. contoured wooden handle for easy use. (Imported)

HT217 | 2½ in.



LEXAN SMOOTHING BLADE



Rigid lexan blade with wooden handle. Ideal for use on heavy vinyl wallcovering.

HT211 | Lexan Smoothing Blade | 9 inch

SELF SHARPENING STAINLESS STEEL SHEARS



Our 11 inch self-sharpening shears are perfect for left or right handed. (Imported)

HT213 | Self Sharpening Stainless Steel Shears

BEVELED SEAM ROLLER - 1 IN.



Webbed plastic bevel shaped roller designed to set wallcoverings in corners and against ceiling/trim.

HT202 | Beveled Seam Roller | 1 in.



MEASURING COUNTERS



Heavy Duty

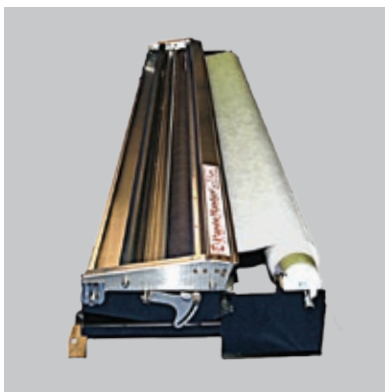
A PA110 Two gear wheels and stainless steel bracket, for Paste Master Deluxe, Heavy Duty and Table Model machines.

Single Wheel

B PA113 Counter and stainless steel bracket for 32 inch Paste Master machine.

C PA111 Counter and stainless steel bracket for 29 inch Paste Master Junior paste machine.

RAMCO 62 IN. HEAVY DUTY TABLE MODEL PAST-MASTER

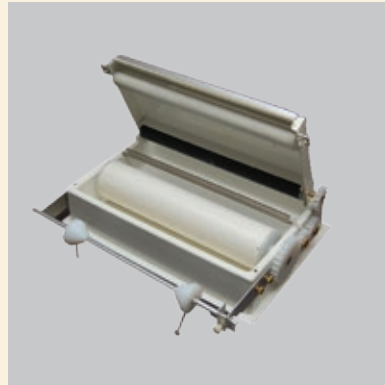


Stainless steel and gear driven table model pasting machine for around the price of a pullbox.

PM62TM | 62 Inch Heavy Duty Table Model

12 IN. BORDER PASTER

NOW GEAR DRIVEN FOR HEAVIER ADHESIVES



Hardshell case sold separately. Handles up to 12 in. borders. Roll holder bar & bracket cutoff slot.

BP01 | Border Paster

29 IN. PASTEMASTER JR.



29 inch, gear driven table model pasting machine for about the same price of a pullbox! Designed for pre-pasted paper with use of activator or thin paste. Hardshell case and inch meter sold separately. Quality construction, high impact ABS, precision anodized aluminum straight edge cut-off slot. Accurate paste adjustment. Optional cleaning tools available (not included).

PJ29 | Pastemaster Junior

HS29 | Hard shell case for Pastemaster Junior

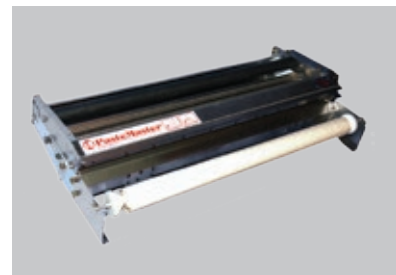
62 INCH HEAVY DUTY RAMCO PASTE-MASTER



Comes complete with: Folding floorstand, Booking table, Inch meter, cleaning tools. Fully operational in seconds.

PM62 | 62 Inch Heavy Duty

32 IN. RAMCO PASTE-MATE TABLE MODEL



Engineered for commercial materials and heavier adhesives. Easy glide roller system with 3/4" nylon gears and paste adjustment. Stainless steel construction easy to clean.

Optional accessories (not included): Hardshell carrying case, PA113 (small) or PA110 (large) inch meter, and PA032 Folding Floorstand.

PM32TM | 32 Inch Table Model

VIKING



VIKING PASTE PRESS

The Viking Paste Press was designed and refined by journeyman vinylhangers. It is aggressively overbuilt out of hospital grade stainless steel.

On the job it will handle full strength clay paste as easy as pie and between jobs it stands up to the roughest trucking.

In short, the Viking is designed to do the work and built to take the punishment. This heavy duty machine sits on 5" full locking casters with non-marking wheels and bumpers. The legs are inch and a half square stainless steel tubing. The frame is one inch square stainless steel tube. The pan, booking table and counter bracket are 16 gauge stainless steel. The rollers are 6061 t-6 aluminum. The gears are 5/8" Delrin. And the counter...well, that's the best we can buy.

The Viking Paste Press handles material up to 55 inches, holds 5 gallons of paste and weighs 185 lbs fully assembled. We ship it in a reusable plywood crate and best of all...it comes fully assembled and ready for work.

VP56 | 55 Inch Viking Paste Press

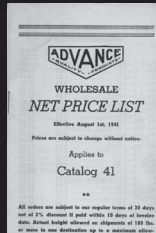
ADVANCE EQUIPMENT MFG., CO.



It was 1922. In Chicago, August Wedekind — a carpenter and contractor — was talking to a friend who said that he thought that wallpaper was the “coming thing,” and that August should start manufacturing tools for that market. Taking his friend’s advice, August began manufacturing paste tables, trestles, and paste boards in his garage, and started selling them to local area hardware stores.

As the business grew, August found that he needed more space and built a 5,000 square foot building on the West side of Chicago, which today is still the current location of Advance Equipment Manufacturing Company. The larger space meant additional machinery with which to create more tools. Products were expanded to include items such as straight edges, seam rollers, casing knives, and wallpaper trimmers.

August’s son, Bill, joined the company in the early 1940s and invented the drywall taping knife, the first of its kind. The product line grew again to include not only more wallcovering tools, but tools for painters and decorators.

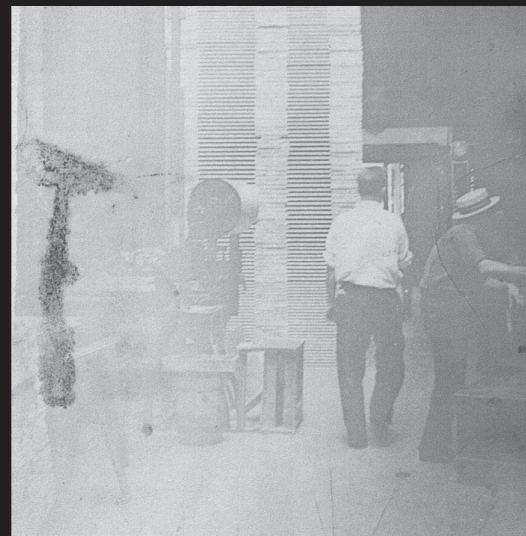
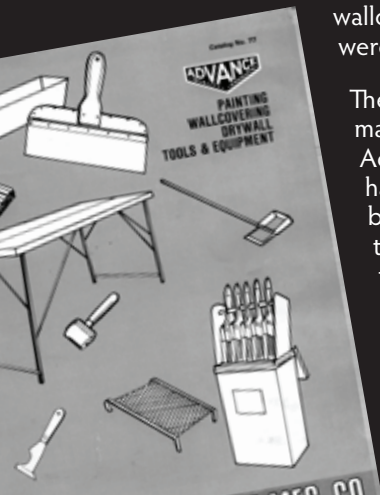


The business and Bill’s family grew proportionally. He and his wife, Mildred, had four sons and a daughter. The boys (John and Paul) became involved with the company and learned the business. After Bill’s death, John, his oldest son, took the helm and now John’s children (John R. and DeAnne), have become the fourth generation of Wedekinds to run the company. In 2009, Advance Equipment welcomed Michael Palermo (DeAnne’s son), the 5th generation family member to join the Advance team of U.S. manufacturers.

In 1992, Advance Equipment purchased the Miramar Company — a wallcovering pasting machine manufacturer — and more products were added.

The 2004 acquisition of Ramco Tools added additional pasting machines and various hand tools to fill out the product line. The Advance Equipment line of high quality American-made tools has been recognized by the industry, and is well regarded by professional contractors. Advance Equipment’s offerings to the trades have grown larger, facilities and manufacturing technology have expanded, and new innovative products are being developed.

Today, Advance Equipment Manufacturing company sells to a market which includes not only the United States, but Canada, Mexico, and a growing overseas market.





ADVANCE EQUIPMENT MANUFACTURING CO., INC.

4615 West Chicago Avenue | Chicago, Illinois 60651

Telephone 773-287-8220 | Fax 773-287-9889 | 800-621-4516

www.advance-equipment.com