



## **B562HD**

### **MANUAL PASTING MACHINE WITH ROLLING STAND**



*Model B562HD Shown with  
Optional Booking Table and  
Transportation Shelf  
(see page 18)*

---

### **Cat. No. 50621**

### **Operating and Parts Manual**

---

Advance Equipment Mfg. Co. Inc.  
4615 W Chicago Avenue, Chicago, IL 60651 U.S.A.  
773.287.8220 • 800.621.4516





# THE ADVANCE “PASTEMATE” ADVANTAGES

- Introduced in September 1981, thousands in service, known for reliability and performance.
- Setup and clean-up is faster than any other paste machine, which means more production.
- One filling of the tank will paste more wallcovering than any other machine.
- Exclusive paste control system pastes all materials, vinyl, string, suede, burlap and grasscloth without staining the face.
- Five rollers all geared together for better paste application.
- Lifetime warranty on the stainless steel paste tank and five years on the drive gears.
- In house manufacturing using computer controlled machinery for consistent quality and longer life.
- Replacement parts are shipped within 24 hours.
- Free consultation with experienced technicians prior to purchase will insure the right product for your needs.
- 100% satisfaction guaranteed!

Follow these instructions for operating the B562-HD PASTING MACHINE with ROLLING STAND.

**PLEASE READ THEM COMPLETELY BEFORE STARTING**

# CONTENTS

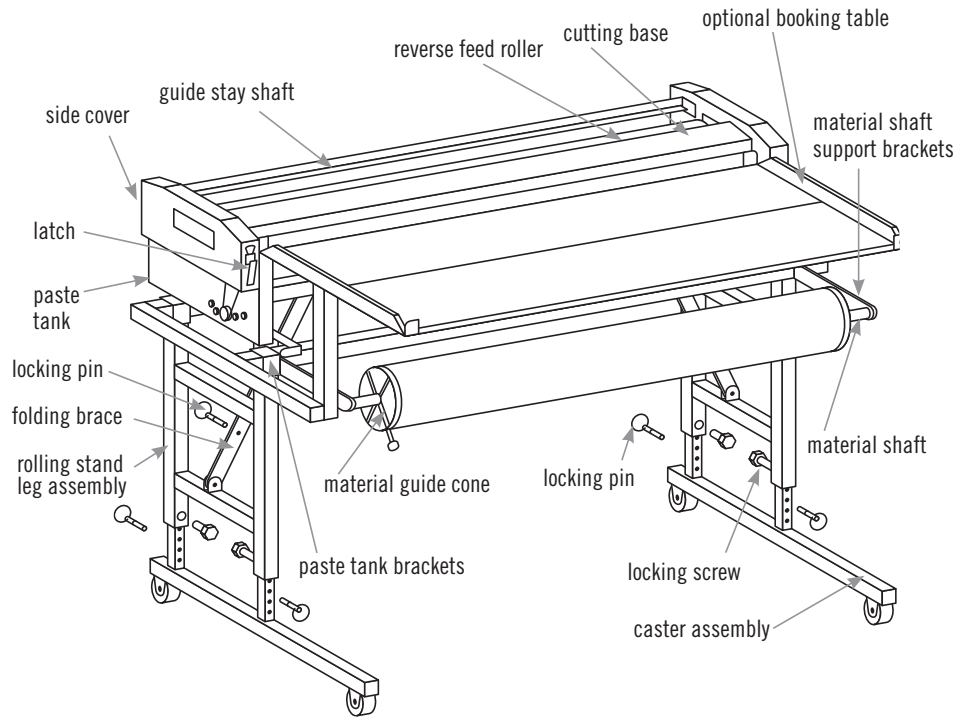
- General Assembly..... 2
- General Instructions..... 3
- Adhesives ..... 4
- Booking Table Option ..... 5
- Opening Side Covers ..... 6
- Pasting Operations ..... 6 – 7
- Paste Control Roller Installation and Adjustment ..... 8
- Measuring Counter Operation..... 9
- Cleaning..... 10
- Storage and Transport..... 11
- Warranty ..... 4
- Specifications ..... 2
- Parts Lists and Drawings ..... 12-17
- Anodizing ..... 4
- Important Options ..... 18





# GENERAL ASSEMBLY

Fig. 1



## SPECIFICATIONS

CATALOG No. 50621

### MODEL B562-HD WITH ROLLING STAND

HEIGHT (rolling stand open)..... 37-3/4 in.  
 HEIGHT (rolling stand folded)..... 12-1/2 in.  
 LENGTH ..... 67-3/4 in.  
 WIDTH..... 12 in.

WEIGHT (machine)..... 121 lbs  
 WEIGHT (accessories)..... 15 lbs.

### OPTIONAL BOOKING TABLE

CATALOG No. 562BT ..... 26 lbs.

### OPTIONAL STORAGE CASE

CATALOG No. 51628 ..... 61 lbs.

### OPTIONAL TRANSPORTATION SHELF

CATALOG No. 562TS ..... 14 lbs.

## GENERAL INSTRUCTIONS

- 1) Before lifting machine from shipping box, remove accessory tool box, the material support bar and the two caster assemblies packed next to the machine.
- 2) Lift out machine by grabbing the stand under the tank. (Two people will be easier)
- 3) Set machine next to the shipping box.
- 4) **Open rolling stand:**
  - a) Lift up one end of machine and open leg assembly (#1313), put legs on floor, lock folding brace (#1314) with steel pin (#1309). Lift other end and repeat procedure.
- 5) **Install caster assemblies:**
  - a) Lift machine at one end and slip caster assembly tubes into tubes of leg assembly. Make sure that casters extend forward towards front of machine (latch side of machine). Repeat with other end.
  - b) Raise machine to insert steel pins (#1311) in caster assembly at desired height. Lock in position by tightening black plastic head lock screws (#1308).
- 6) Remove stainless steel cover.
- 7) Unlock both quick releases (latches) on machine lid and open lid. Remove packaging material from rollers in tank.
- 8) Close lid of machine and with your hand on rubber covered reverse feed roller, rotate rollers and check that they rotate smoothly without any binding.
- 9) Always lay rollers down on a dropcloth when removed from the tank. Do not lean them against a wall or table, they may get damaged if dropped.
- 10) We recommend removing and cleaning the rollers each night to insure long life. Adhesive can be left in the tank overnight.



## ADHESIVES

With a deep paste tray and a pickup roller, most types of paste may be used in the machine. However, successful machine operation depends to a great extent on the right paste consistency. Working with the machine will teach you how properly prepared paste should look. As a guide, it should have the consistency of heavy pancake batter. The paste will, in most cases, have to be thinned with water and should be thoroughly mixed, using an electric mixer. When using clay based adhesives, pull the maximum number of sheets from one filling of the tray to prevent the paste settling in the tray. Then add paste and pull the next batch. Clay adhesives will have to be agitated again when left at rest for some time.

**Note:** The machine rollers are made of aluminum alloy which is hard anodized after being machined. This process puts a hard coating on the surface and hardens the base aluminum to the same depth. This makes the aluminum more wear resistant than hardened steel. However, if the adhesive is excessively acid or alkaline, it may cause roller pitting and you should change your adhesive. To protect your rollers, remove and clean them every night and use an adhesive with pH range of 5.0 to 8.5.

## ANODIZING

We protect the aluminum rollers in our pasting machines by hard anodizing them. The anodizing is done in accordance with ASTM (American Society of Testing Materials) military specifications and we use type III, which is the hardest coating. The aluminum used is type 6061, which accepts the anodizing process very well. Anodizing is an electrochemical process, which builds a coating of .001 to .0015 to the surface of the roller and penetrates the same amount below the surface. This hardcoat will be file hard and have a Rockwell hardness of 48-54 and the wear resistance is superior to hardened steel. Hard anodized coatings will not peel, since the coating is an integral part of the base metal. As the coating thickness increases, the time capillary pores microscopically form a honeycomb pattern, that seals itself, making the roller exceptionally corrosion and wear resistant. However, it should be noted that strong caustic solutions or acids may cause pitting or the hardcoat to disintegrate. Therefore, it is recommended that adhesives used in the machine should have a pH factor, which is close to neutral, in the range 5.0 to 8.5. It should be mentioned that the color of the roller is affected by the composition of the aluminum alloy and will range from dark gray/brown to dark black.

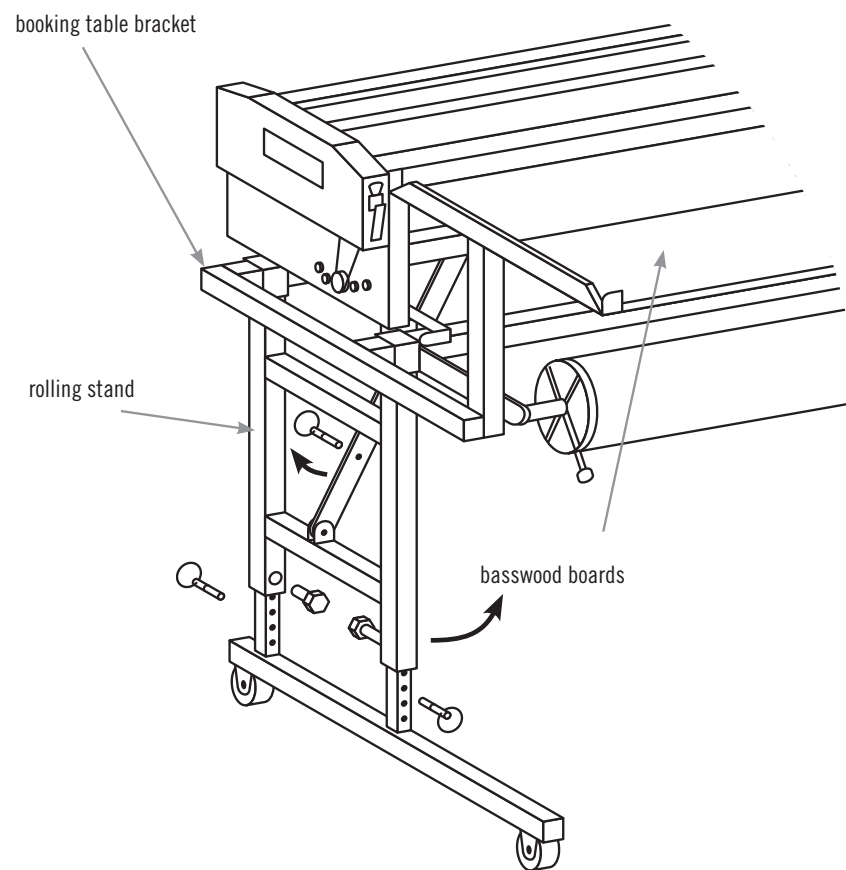
## WARRANTY

Paste-Mate pasting machines are warranted for 12 months from date of purchase, by the original purchaser, against defective materials and workmanship, provided it has been installed and operated in accordance with factory instruction. Driving gears have a 5 year warranty against tooth breakage. The paste tank has a lifetime warranty. (Normal wear and tear or damage caused by misuse, abrasion, corrosion, accident, negligence, faulty installation or tampering excluded). Advance Equipment will repair or replace free of charge (ground shipment only) all defective parts if returned prepaid to their warehouse.

## BOOKING TABLE OPTION

1. Remove square tube end caps from rolling stand and insert booking table support brackets on left and right side. Lock in place by turning locking bracket.
2. Board supports will be in front of machine over material support bar.
3. Lay both basswood boards in supports after you have installed wallcovering material on supports and have loaded it into the machine.
4. You are now ready for operation.
5. Maintain your basswood boards by lightly re-sanding and resealing once a year.

**Fig. 2**





## OPENING THE SIDE COVER

You can find a quick release at the top of each side cover.

Pull each quick release in the direction of arrow and you can open the cover (Refer to fig. 3)

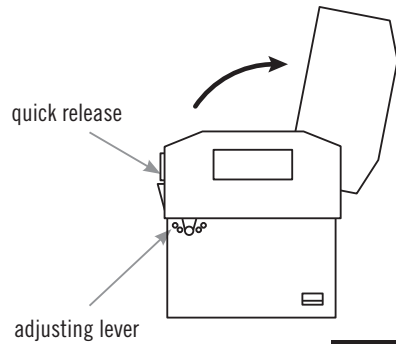


Fig. 3

## PASTING OPERATIONS

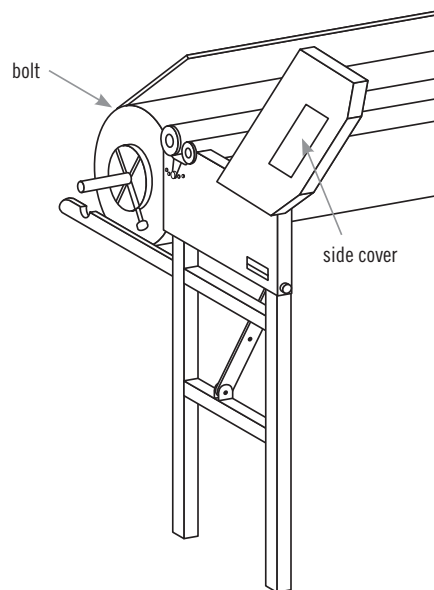
Swing out material support brackets from under paste tank.

Put the material shaft in the center of the bolt of material and set it on the bolt supports (shown Fig. 4) after sliding on material discs and locking setscrew.

Pour paste into the paste tank. (Refer to Fig. 6). Do not fill paste higher than lower line of adjustable roller. Close and latch side covers. Rotate the reverse feed rubber roller to distribute paste.

Adjust the thickness of paste by moving the adjusting lever in the direction of the arrow (shown in Fig. 3), move adjusting levers on both ends. Check paste thickness by running finger over paste roller. Set the adjusting levers at a suitable position at each end.

Fig. 4



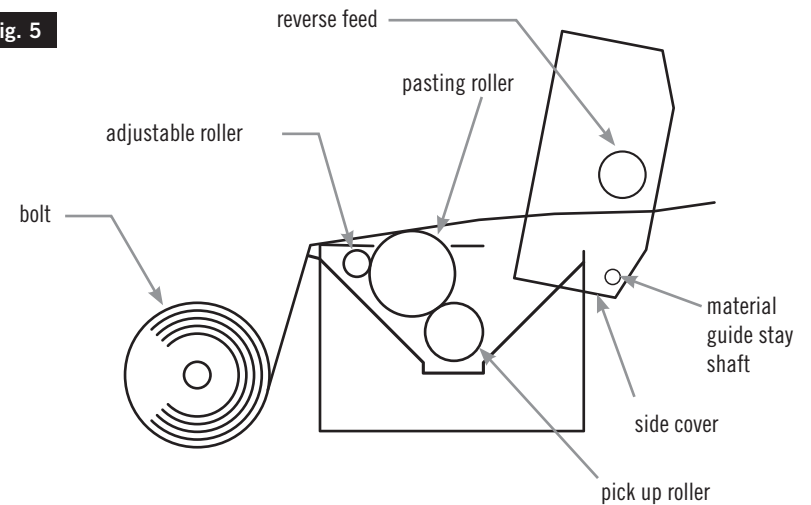
Pull out the material and lay it on the paste roller as (shown in Fig. 5) after opening the side covers. Close and latch the side covers. The material will be coming forward (paste side up) from behind the reverse feed roller.

Two trestles in front of the machine holding a board of about 26- 28 inches wide parallel to the machine, can be used to fold your material. Alternatively you can put two narrow tables at right angles to the machine and walk between them.

You can also fold directly against the machine without using a table or use our optional booking table. (Refer to page 5)

( CONTINUED ON NEXT PAGE )

Fig. 5



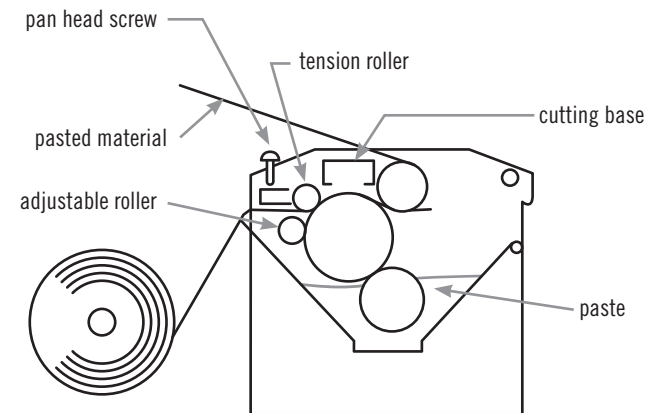
Usually, changing the adjustment between tension roller and pasting roller is not needed for proper material pasting. However, if material surface is extremely thin or uneven and pasting is not satisfactory, loosen pan head screw (1) as shown in (Fig. 6) by using a screwdriver. With the screw loosened, tension roller moves closer to the pasting roller which puts more pressure on the material. Only loosen screw closest to you.

You are now ready for operation.

Hold both sides of material with both hands, and draw out towards the direction of arrow (Fig. 6). Keep a constant pulling speed for even pasting.

Clearance between pick up roller and paste roller should be about 0.022- 0.025 inch. If necessary, adjust by raising or lowering pick up roller supports bushings in tank.

Fig. 6



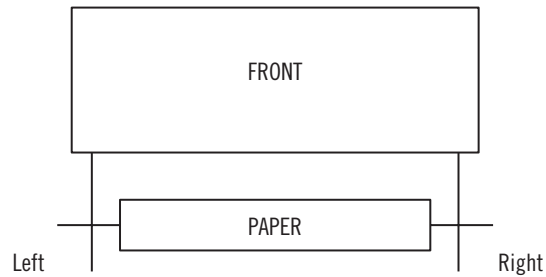


# PASTE CONTROL ROLLER INSTALLATION AND ADJUSTMENT

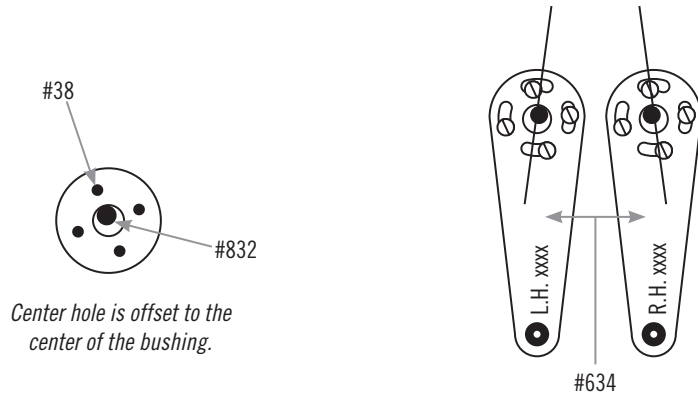
Insert the paste control roller ends in the paste tank holes and lock the bushings (#832) in place with the retaining ring (#441)

Set the roller clearance as follows:

1. Facing the side of the tank, hold the bushing with your fingers and turn so shaft is upwards towards the paste roller (#1659)
2. Now turn the bushing in the opposite direction and using a feeler gauge set clearance to between .002" and .004". Make this adjustment on each end of the adjusting roller.
3. Position the adjusting lever (#834) against bushing (#832) with pin hole, and check that the slotted holes in lever match screw holes in bushing. You might have to turn the bushing slightly. If so reset bushing on the other side to match.
4. Fasten slotted levers to the bushings on each end with 4 (#2) lock washers and 4 (#38) screws.
5. Re-check roller clearance from end to end with lever in pin hole #1 (closed) position.



*Facing the machine, looking over the material bar views left and right sides.*



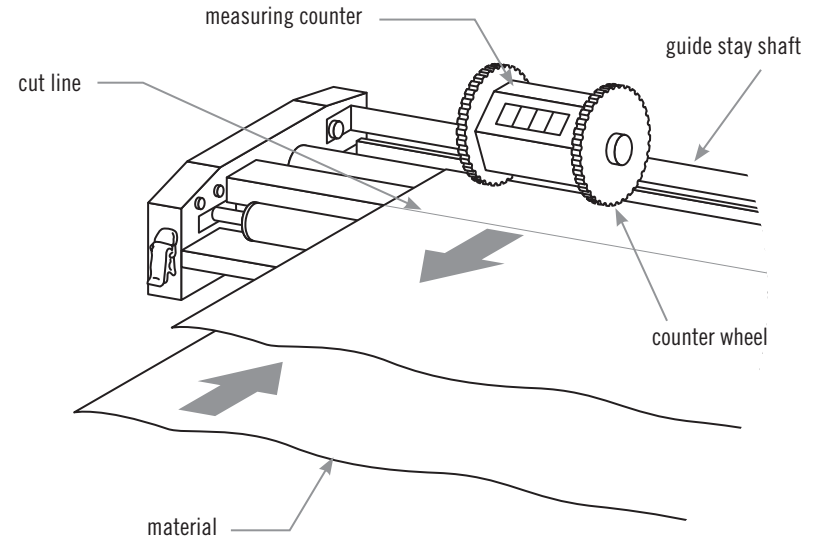
*Center hole is offset to the center of the bushing.*

*Eccentric hole of bushing should be up and forward to paste roller in closed position.*

# MEASURING COUNTER OPERATION

Counter base is attached to the guide stay shaft and measuring counter is placed on the pasted material reversed by the reverse feed roller. Pull out the pasted material until the cut line (Fig. 7) and lift the red reset lever of the measuring counter, and it will show "0000." Then pull out the material to paste, as you are reading the numbers on the counter. You can read the length of the pasted material in "Inches."

**Fig. 7**



Measuring Counter No. 51114



## CLEANING

After operation, pull out drainage cap from the bottom of the tank, and drain out the remaining paste.

The Pasting roller is taken out by lifting up both sides of the roller together.

The Pickup roller is lifted on the right-hand side first to release it from the leaf spring then pull it out of the hole in the left-hand bearing.

Wash both rollers in a bucket. Dry them and lay them down on a dropcloth to prevent damage.

Main body (tank) should be washed well, separate from the pasting roller. Other parts also must be cleaned.

Wipe machine clean and dry.

The life capability of your machine depends on thorough cleaning.

Fig. 8

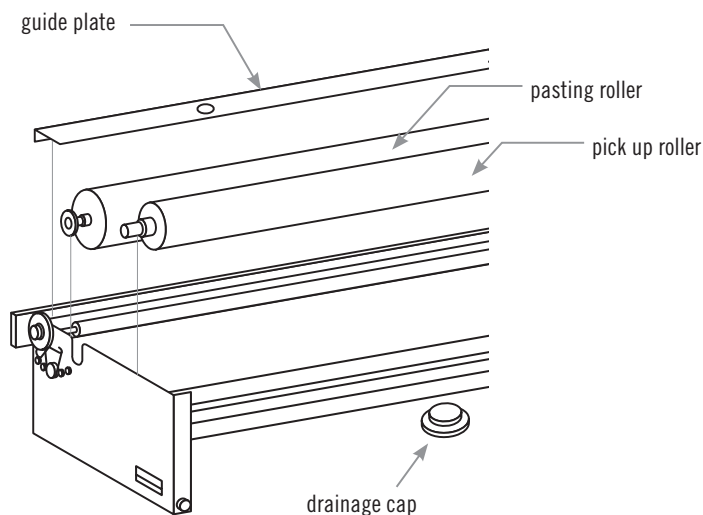
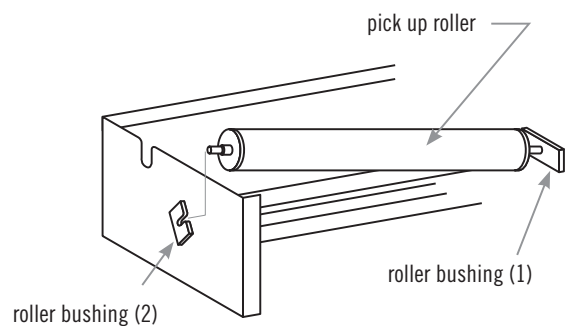


Fig. 9



## STORAGE AND TRANSPORT

Remove material support bar from machine.

If booking table is used, remove boards and two brackets in sides of rolling stand.

Clean paste tank and rollers as previously instructed.

Close lid and lock both latches.

Legs can be folded with or without caster assembly in place.

If you want to remove them, loosen from locking screws first. If not, make sure that all four screws are tight.

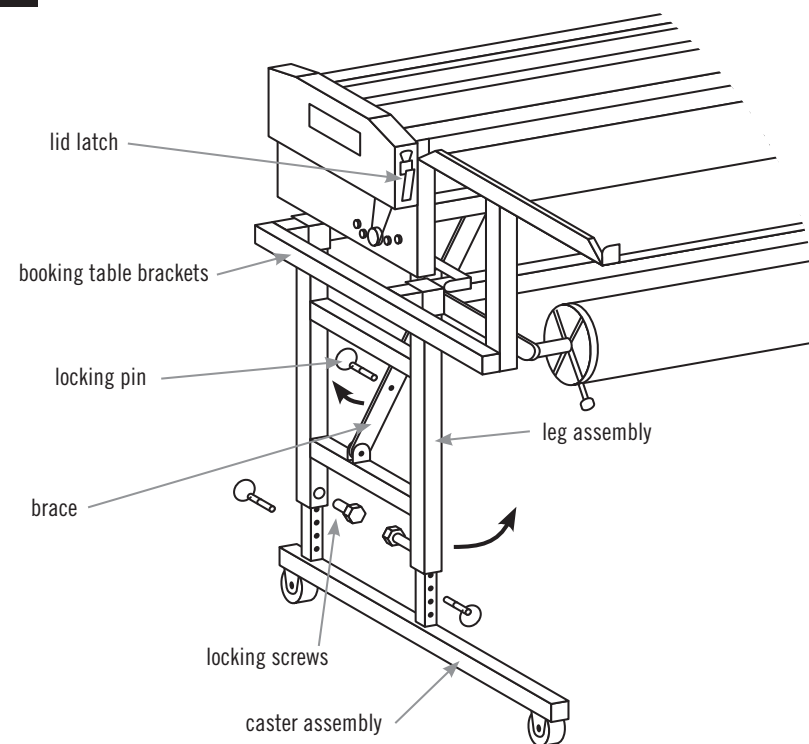
Pull out locking pin from leg brace on one end.

Lift machine at this end and fold against bottom of tank. Do the same on other end.

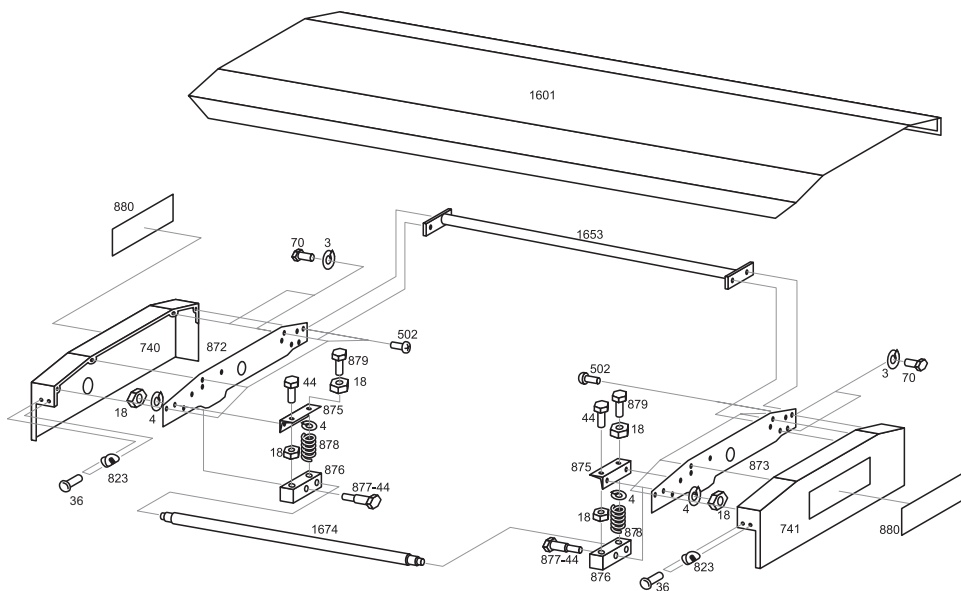
Put stainless steel cover on machine and wrap bungee cords around tank and cover to hold it in place.

The machine may now be stored or transported.

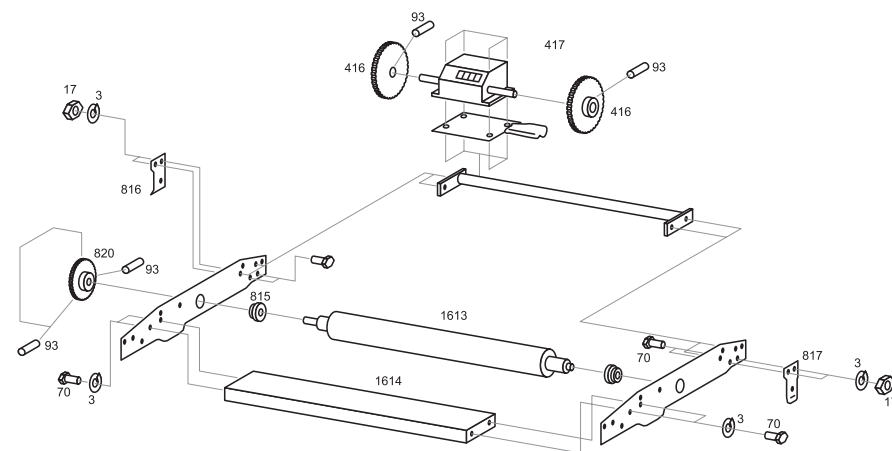
Fig. 10







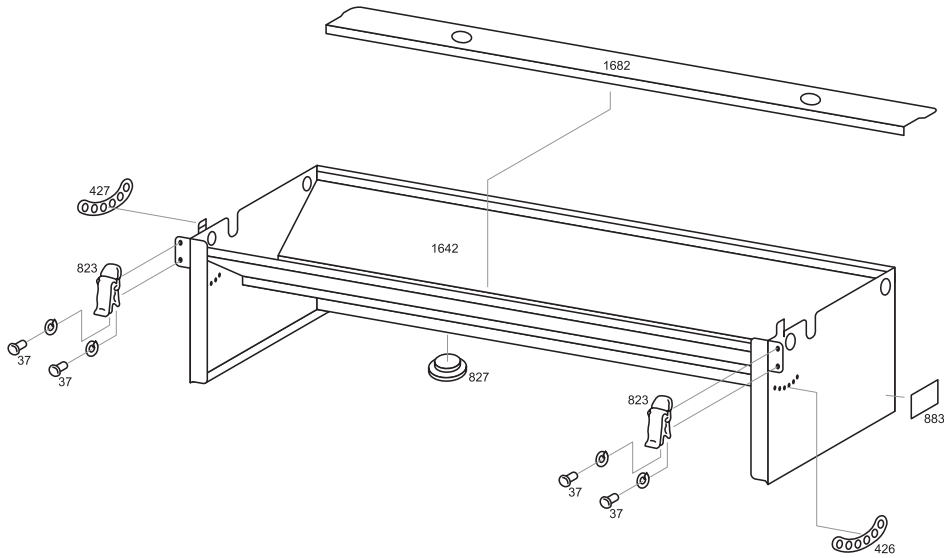
Part No.	Description	Qty.*
3	Spring Washer (M5)	14
4	Spring Washer (M6)	2
18	Hexagon Nut (M6)	6
36	Pan Head Screw	4
44	Bolt	2
70	Hex Bolt (M5x210)	12
502	Pan Head Screw (4x8)	12
740	L. Side Cover	1
741	R. Side Cover	1
823	Quick Release Set	2
872	Side Plate w/bracket	1
873	Side Plate w/bracket	1
875	Bracket = 872-873	2
876	Swing Bar	2
877	Pin 877-44	2
878	Spring	2
879	Bolt	2
880	Label	2
1601	Top Cover	1
1653	Guide Stay Shaft	1
1674	Tension Roller	1



Part No.	Description	Qty.*
3	Spring Washer (M5)	14
17	Hexagon Nut (M5)	6
40	Pan Head Screw (M4x10)	4
70	Hex Head Bolt	12
93	Hex Socket Screw (M5x10)	9
416	Counter Wheel	2
417	Measuring Counter w/Bracket	1
774	Counter Base	1
815	Bushing	2
816	Stopper-L	1
817	Stopper-R	1
818	Washer	2
820	Spur Gear (28T)	1
1613	Reverse Feed Roller	1
1614	Cutting Base	1

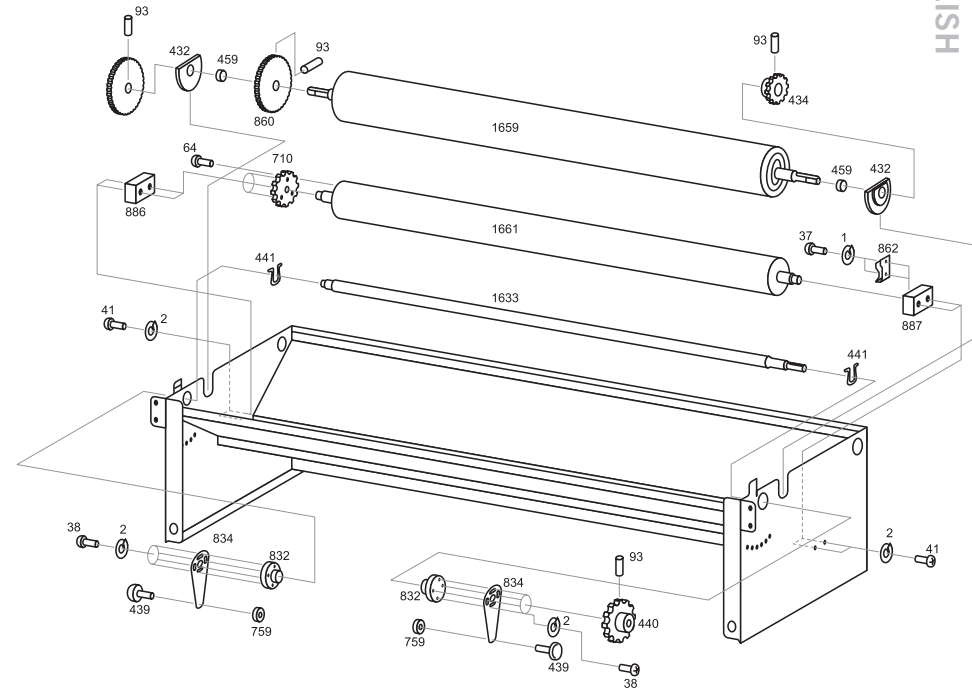


# B562-HD



Part No.	Description	Qty.*
1	Spring Washer (M3)	4
37	Pan Head Screw	2
426	Label (Close-Open)	1
427	Label (Open-Close)	1
823	Quick Release Set	2
827	Drain Plug	1
883	Label	1
1642	Main Body	1
1682	Guide Plate	1

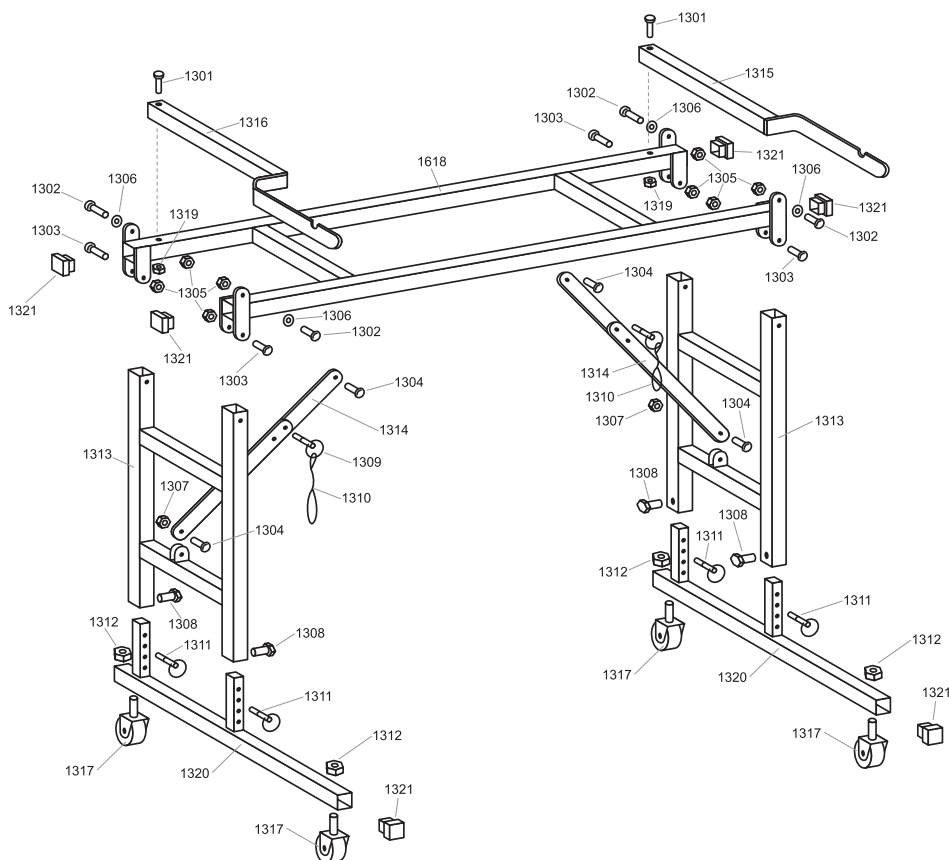
# B562-HD



Part No.	Description	Qty.*	Part No.	Description	Qty.*
1	Spring Washer (M3)	2	886	Roller Bushing	1
2	Spring Washer (M4)	2	887	Roller Bushing	1
37	Pan Head Screw	2	1633	Adjustable Roller	1
38	Pan Head Screw (M4)	8	1659	Pasting Roller	1
41	Pan Head Screw (M4x15)	4	1661	Pickup Roller	1
64	Flat Head Screw (M4x15)	3			
93	Set Screw	4			
432	Bushing 432-459	2			
433	Spur Gear (44T)	1			
434	Spur Gear (21T)	1			
440	Spur Gear (34T)	1			
441	Snap Ring	4			
710	Spur Gear (33T)	1			
759	Nylon Lock Nut	2			
439	Set Screw -Brass	2			
832	Bushing	2			
834	Adjusting Lever	2			
860	Spur Gear (40T)	1			
862	Leaf Spring	1			

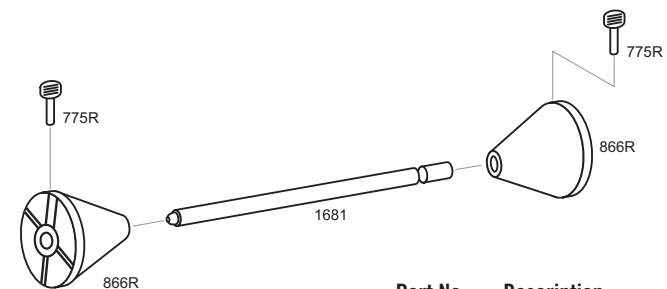


## ROLLING STAND



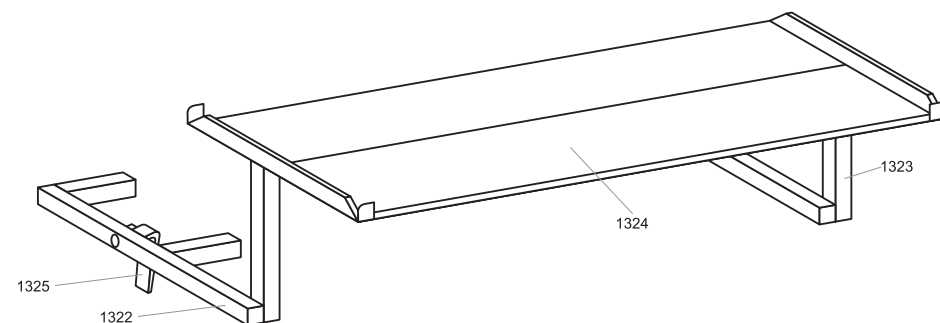
Part No.	Description	Qty.*	Part No.	Description	Qty.*
1301	1/4-20 X 2 1/4" Machine Screw	2	1311	1-1/2" Lock Pin	4
1302	1/4-20 X 3/4" Machine Screw	4	1312	1/2-13 Nut (Caster)	4
1303	1/4-20 X 1 1/2" Machine Screw	4	1313	Folding Leg Assembly	2
1304	1/4-20 x 3/4" Machine Screw	4	1314	Rolling Stand Brace	2
1305	1/4-20 Nut	6	1315	Material Shaft Support Bracket R.H.	1
1306	1/4" Flat Washer	4	1316	Material Shaft Support Bracket L.H.	1
1307	1/4-20 Nylok Nut	4	1317	4" Casterw/brake	4
1308	1/4-20 Lock Screw -3 Wing 4	4	1618	Rolling Stand Main Assembly	1
1309	1" Lock Pin	2	1319	1/4-20 Nylok Nut	4
1310	Nylon Lanyard	2	1320	Caster Assembly	2
			1321	Plastic End Caps	8

## MATERIAL SHAFT B562-HD



Part No.	Description	Qty.*
1681	Material Shaft	1
866R	Cones	2
775R	Thumbscrew	2

## OPTIONAL BOOKING TABLE B562-HD



Part No.	Description	Qty.*
1322	Bracket (L.H.)	1
1323	Bracket (R.H.)	1
1624	Basswood Board	2
1325	Locking Bracket	2
1303	1/4-20 Machine Screw 1 1/2"	2
1305	Nut 1/4-20 (by way)	2

## TOOLS

HEX KEY ..... 2.5 MM.  
FEELER GAUGE ..... 002- .02



# IMPORTANT OPTIONS FOR PASTEMATE B562HD PASTING MACHINE

## OPTIONAL BOOKING TABLE FEATURES:

Easy secure attachment to rolling stand

Table moves together with pasting machine on jobsite

CATALOG No. 562BT ..... 26 lbs.



## OPTIONAL TRANSPORTATION SHELF FEATURES:

Transport adhesives & tools to job site

Stabilizes rolling stand

Strong, yet lightweight

Drops right into place

Made of sturdy, galvanized steel

Also available-for 56" machine

CATALOG No. 562TS ..... 14 lbs.

## OPTIONAL STORAGE CASE

CATALOG No. 51628 ..... 61 lbs.

